

**GUI screen that enables the subject of multiple PTZ Cameras to be switched with a single click of an icon**

## **AW-SF300**

Panasonic's Visual Preset Software adds intuitive GUI-based operation to the free to download PTZ Control Centre software. This enables the management and control of PTZ camera presets whilst incorporating photos and layout diagrams assigned by the user.

### **Key Features**

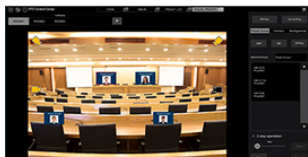
GUI screens can be set for each shooting location and Preset Groups with registered subject positions can be managed.

All cameras registered in a group can be directed toward the subject with a single press of the Preset Group icon on the GUI screen.

Camera positions are displayed as icons on the GUI screen. The icons of cameras in the currently selected Preset Group are highlighted, enabling the user to see which cameras are shooting at a glance.

Operation using a PC mouse and GUI screen provides ease of use for users who are unfamiliar with the operation of video equipment.

EasyIP Setup Tool Plus is included with this product, no separate installation is required



AW-SF300

<https://ap.connect.panasonic.com/vn/en/aw-sf300>