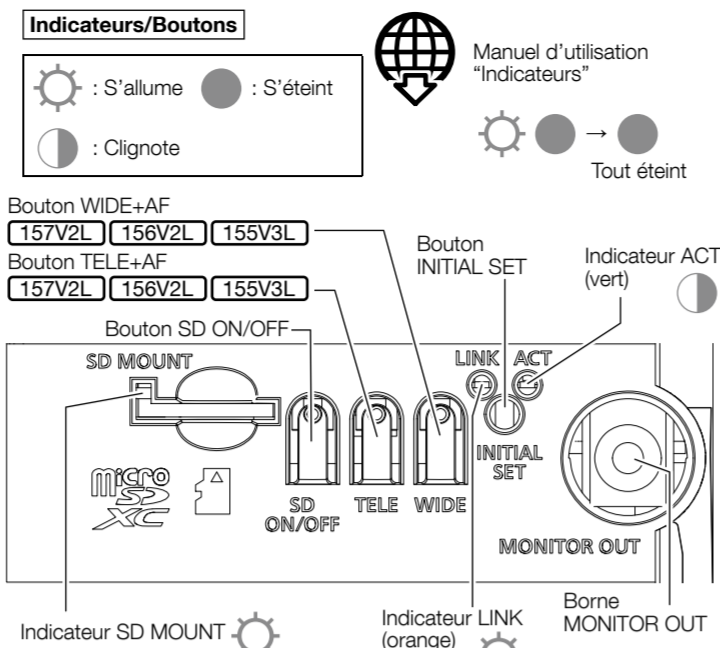
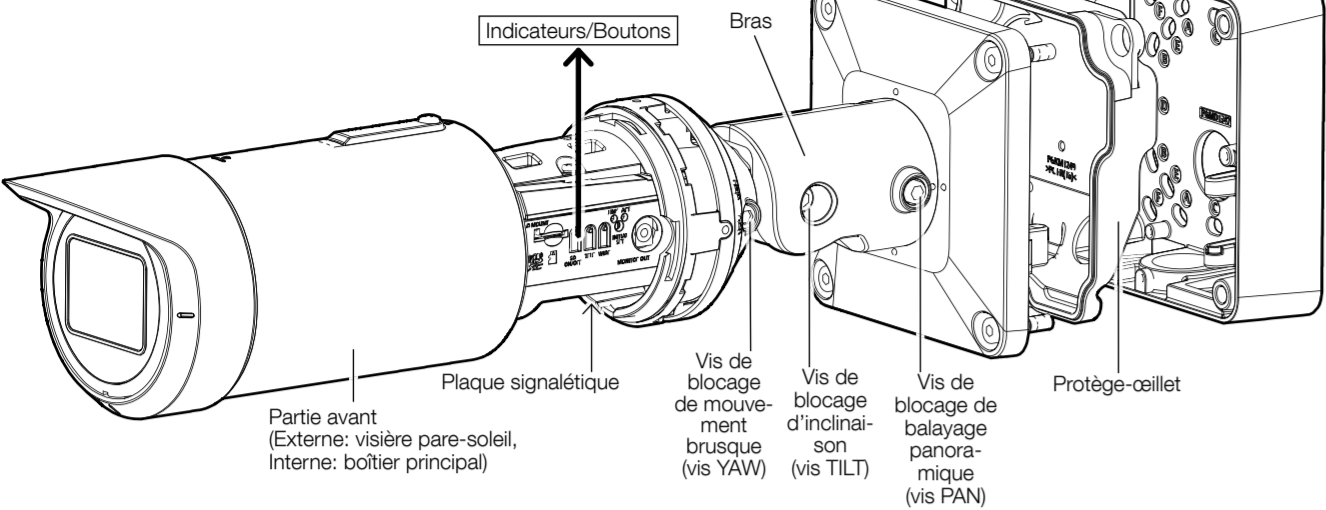


# Procédure d'installation

## Pièces et fonctions

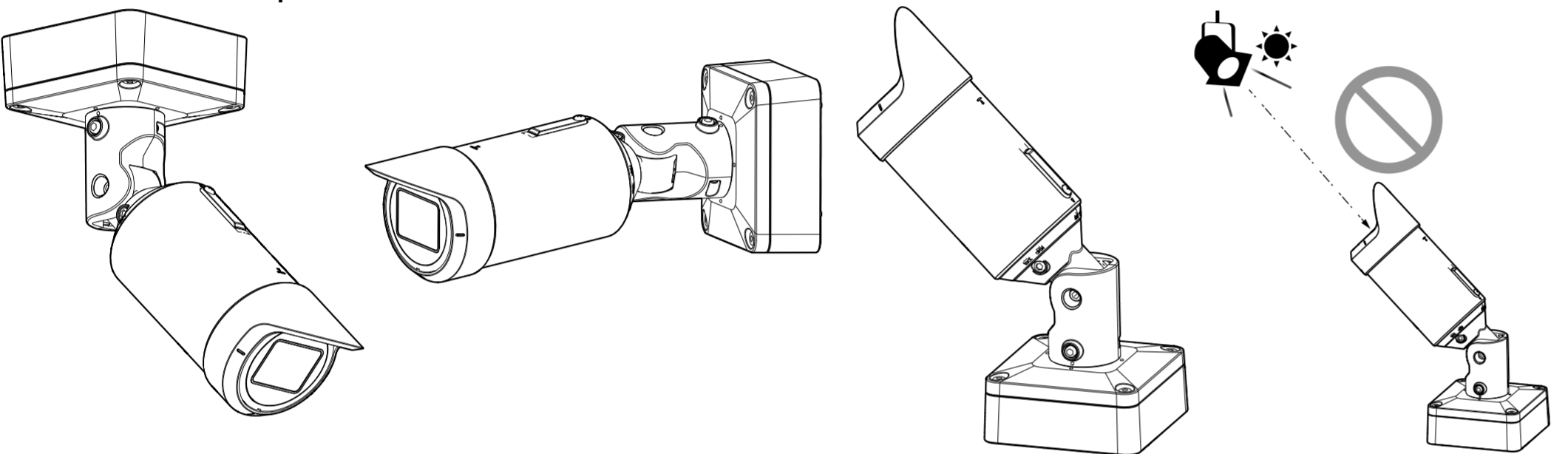


## Méthode d'installation

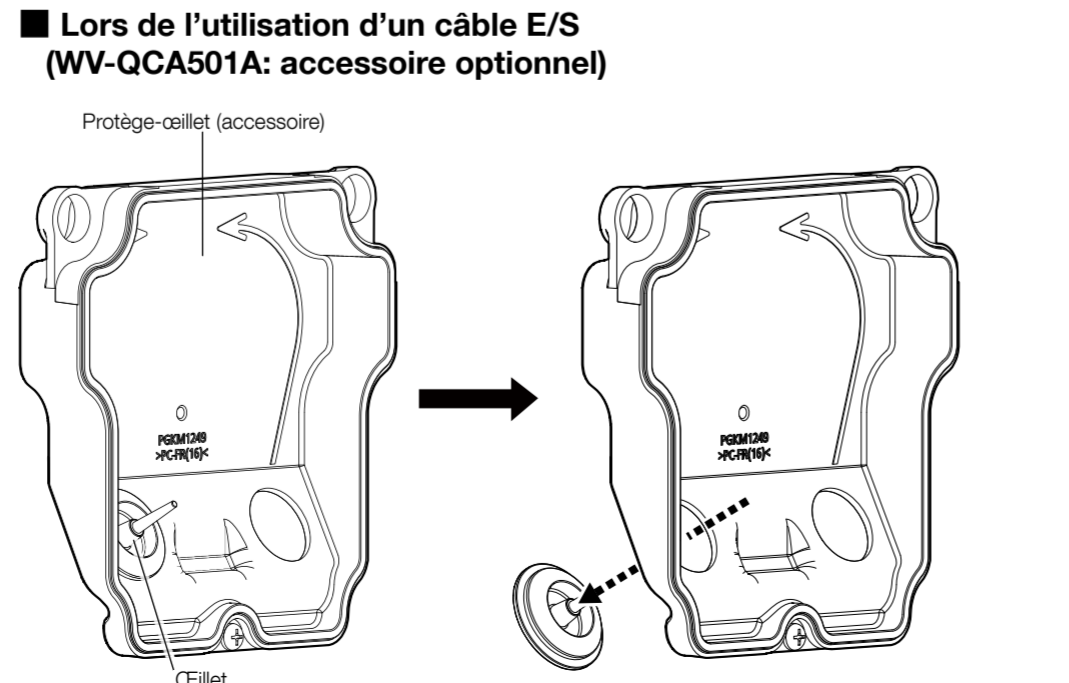
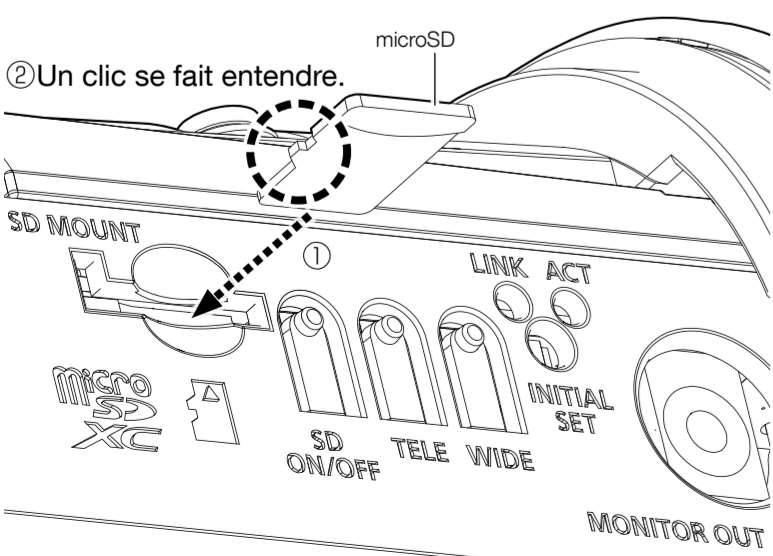
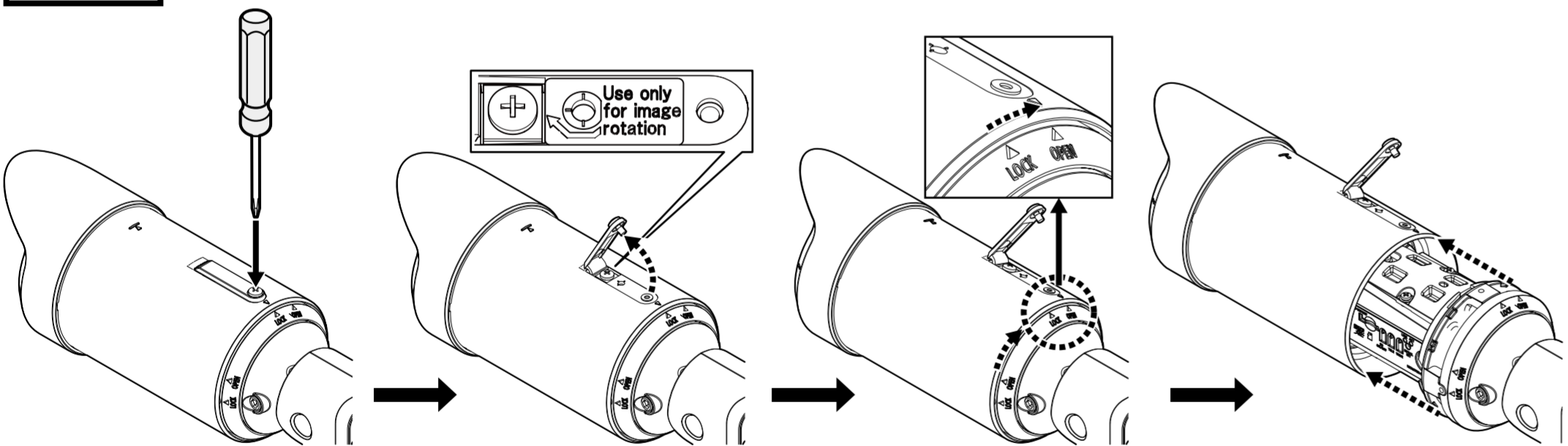
Pour une installation au plafond

Pour une installation murale

Pour les installations orientées vers le haut

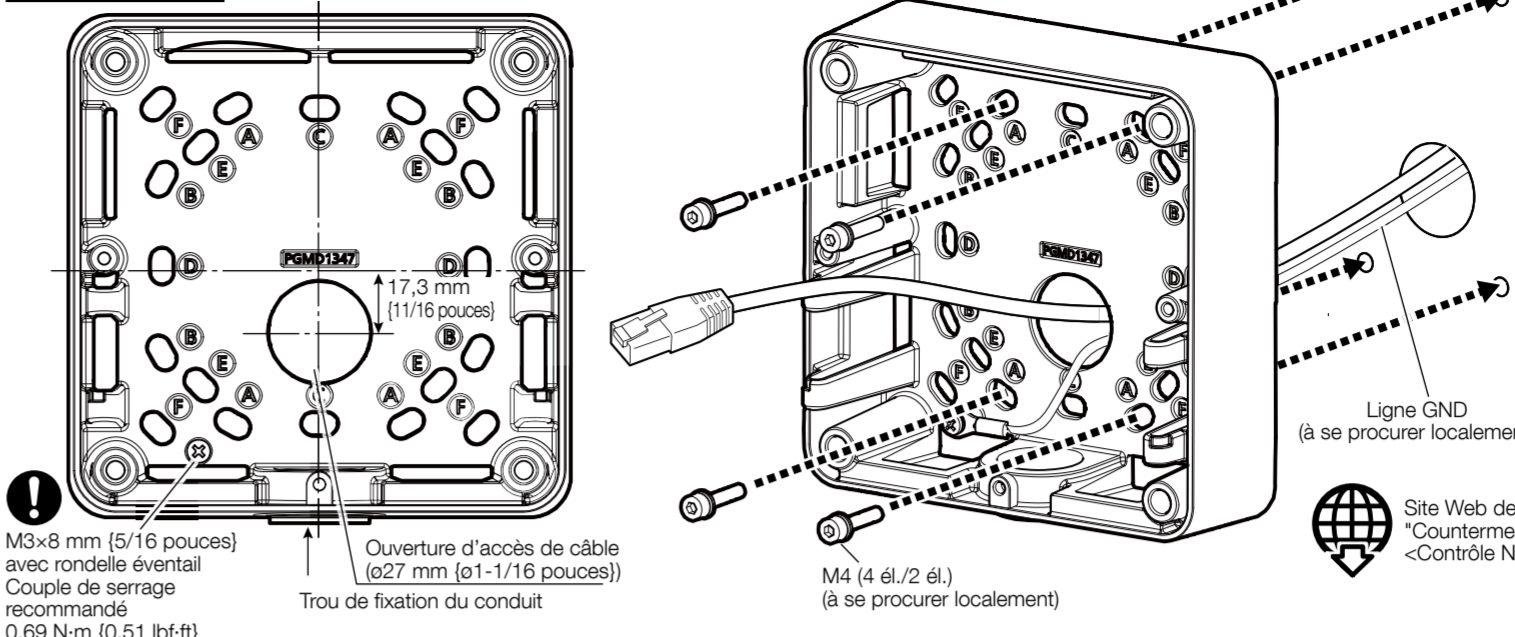


## Étape 1 Préparatifs



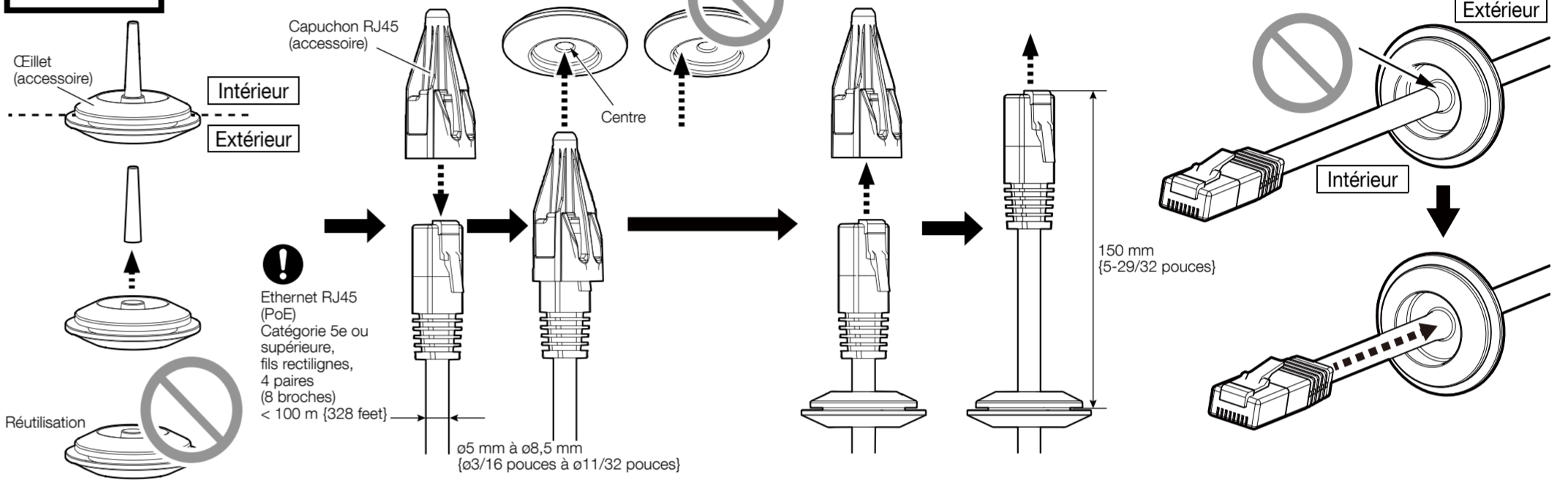
Manuel d'utilisation "Formater la carte de mémoire microSD"  
 Utiliser une carte de mémoire microSD destinée aux caméra i-PRO.

## Étape 2

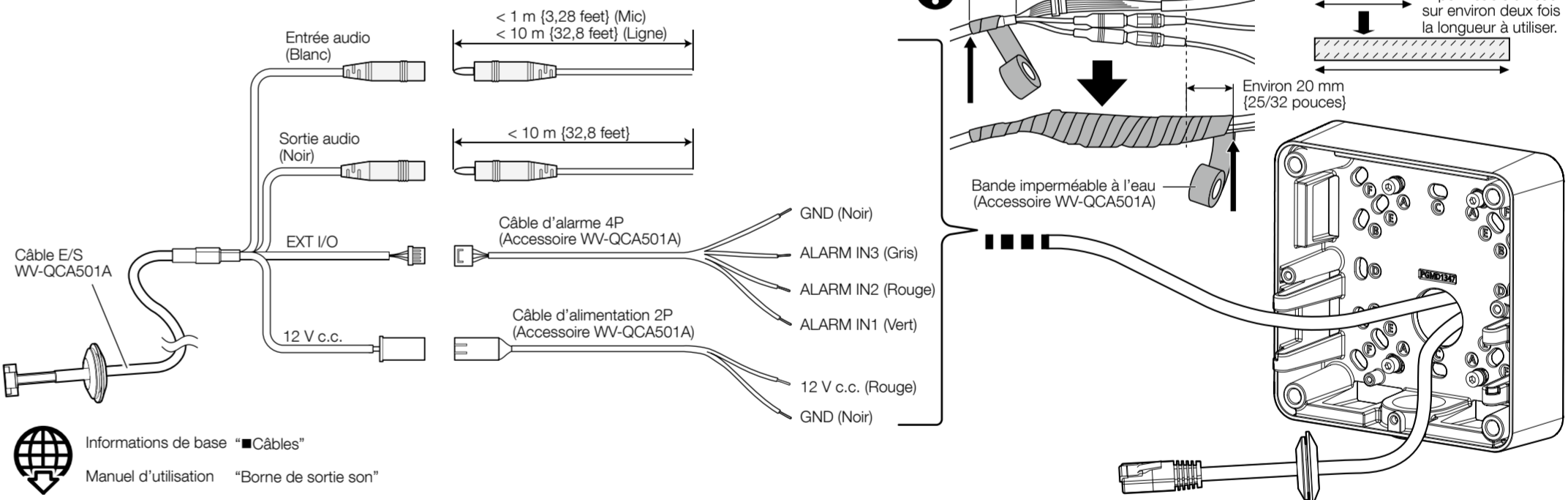


	Direction verticale	Direction horizontale
A	83,5 mm (3-9/32 pouces) (82,5 mm (3-1/4 pouces))	46 mm (1-13/16 pouces) (47,6 mm (1-7/8 pouces))
B	46 mm (1-13/16 pouces) (47,6 mm (1-7/8 pouces))	83,5 mm (3-9/32 pouces) (83,3 mm (3-9/32 pouces))
C	83,5 mm (3-9/32 pouces) (83,3 mm (3-9/32 pouces))	-
D	-	83,5 mm (3-9/32 pouces) (83,3 mm (3-9/32 pouces))
E	63 mm (2-15/32 pouces)	63 mm (2-15/32 pouces)
F	85,7 mm (3-3/8 pouces)	85,7 mm (3-3/8 pouces)

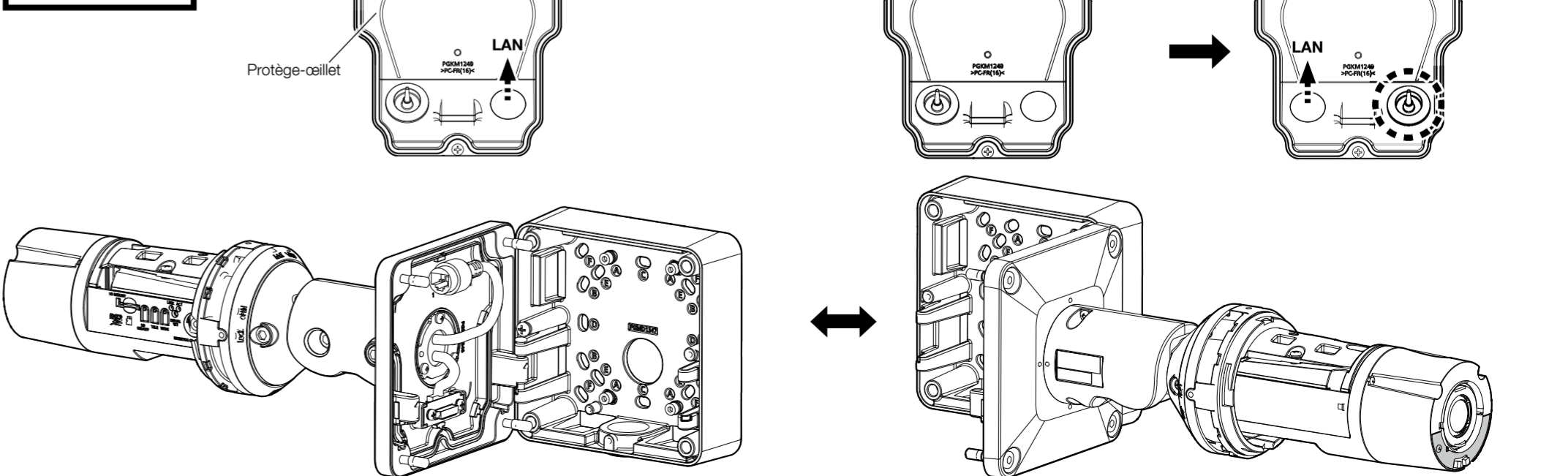
## Étape 3



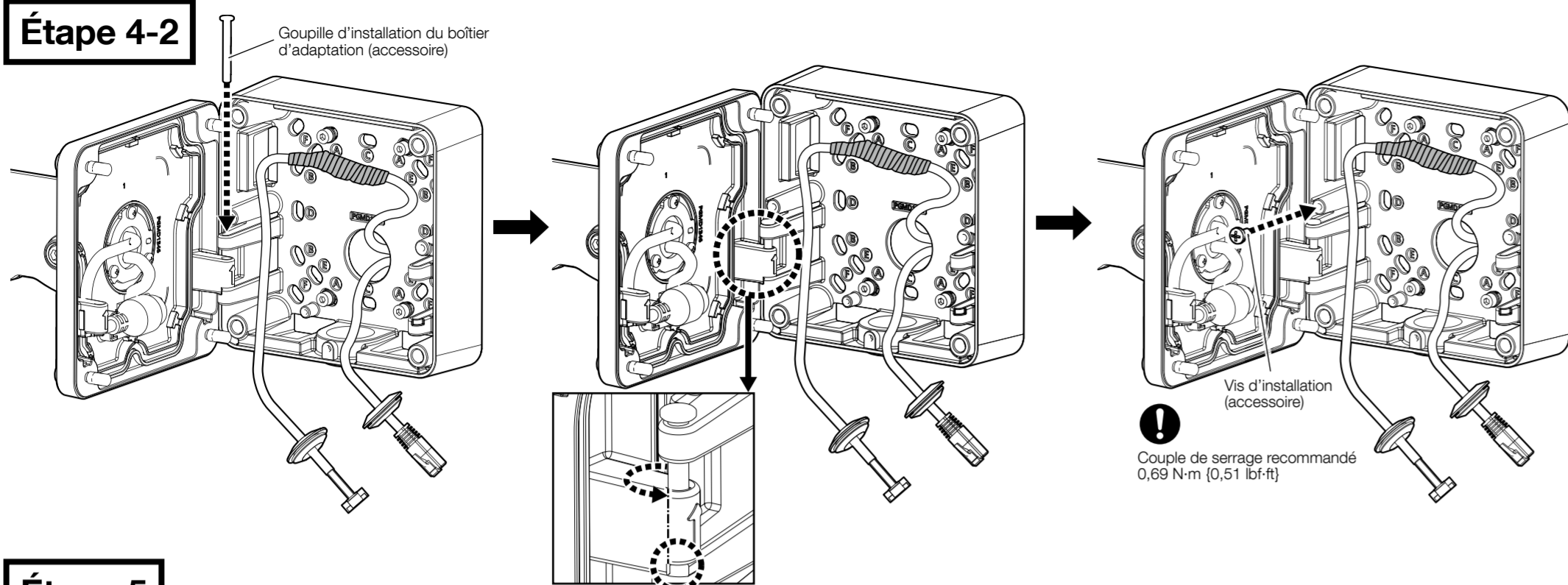
### Lors de l'utilisation d'un câble E/S (WV-QCA501A: accessoire optionnel)



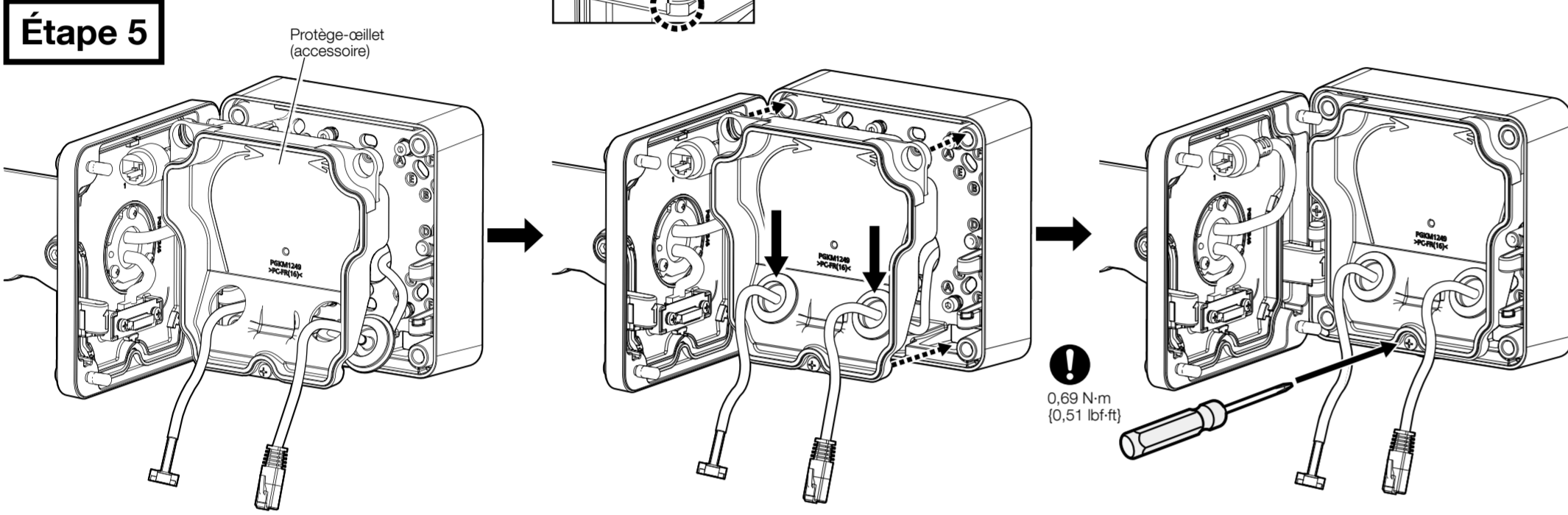
## Étape 4-1



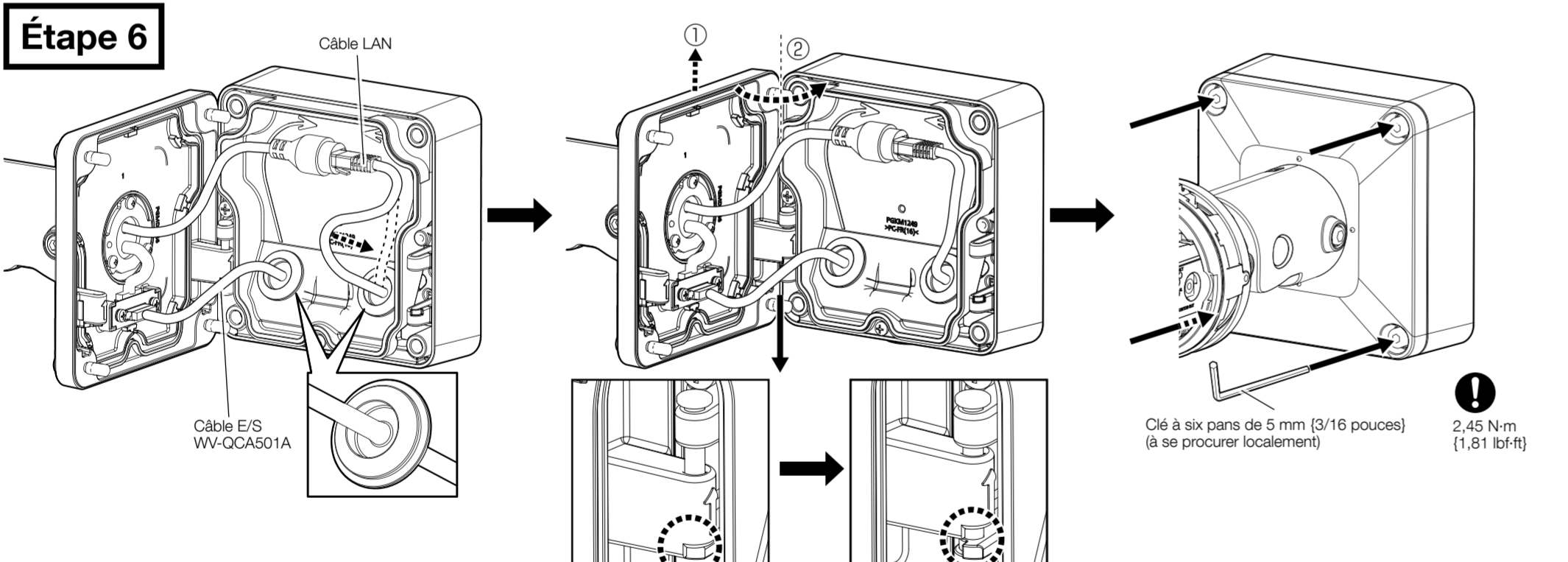
### Étape 4-2



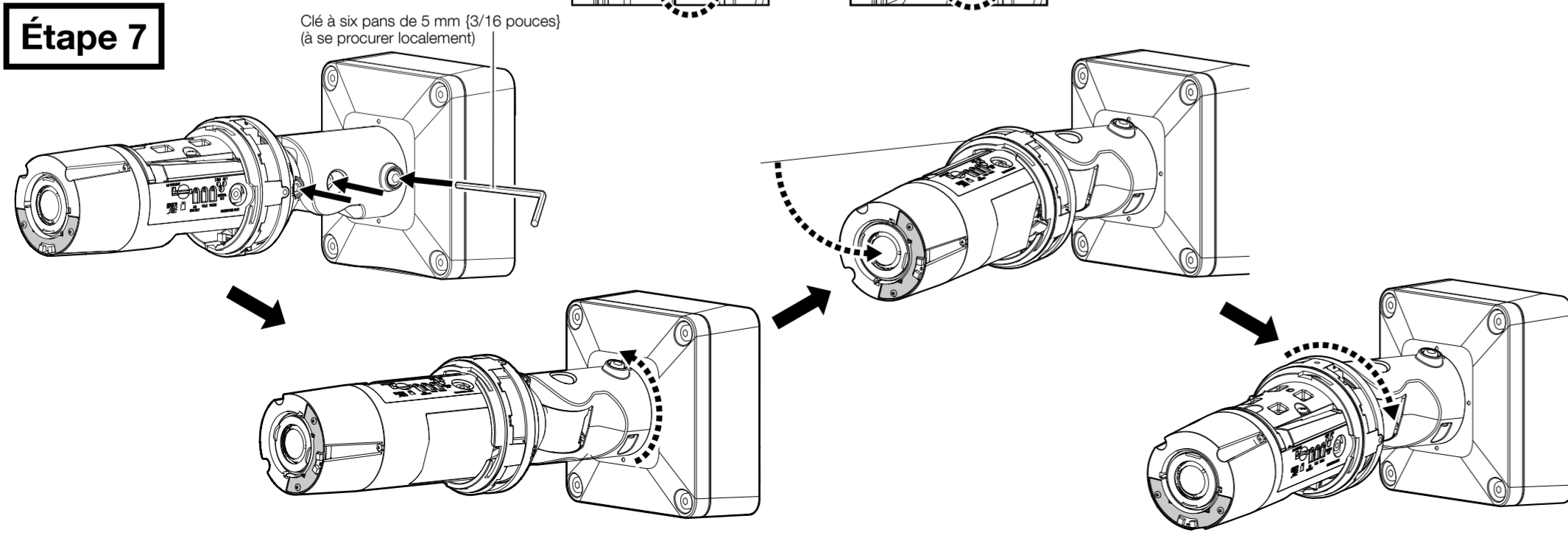
### Étape 5



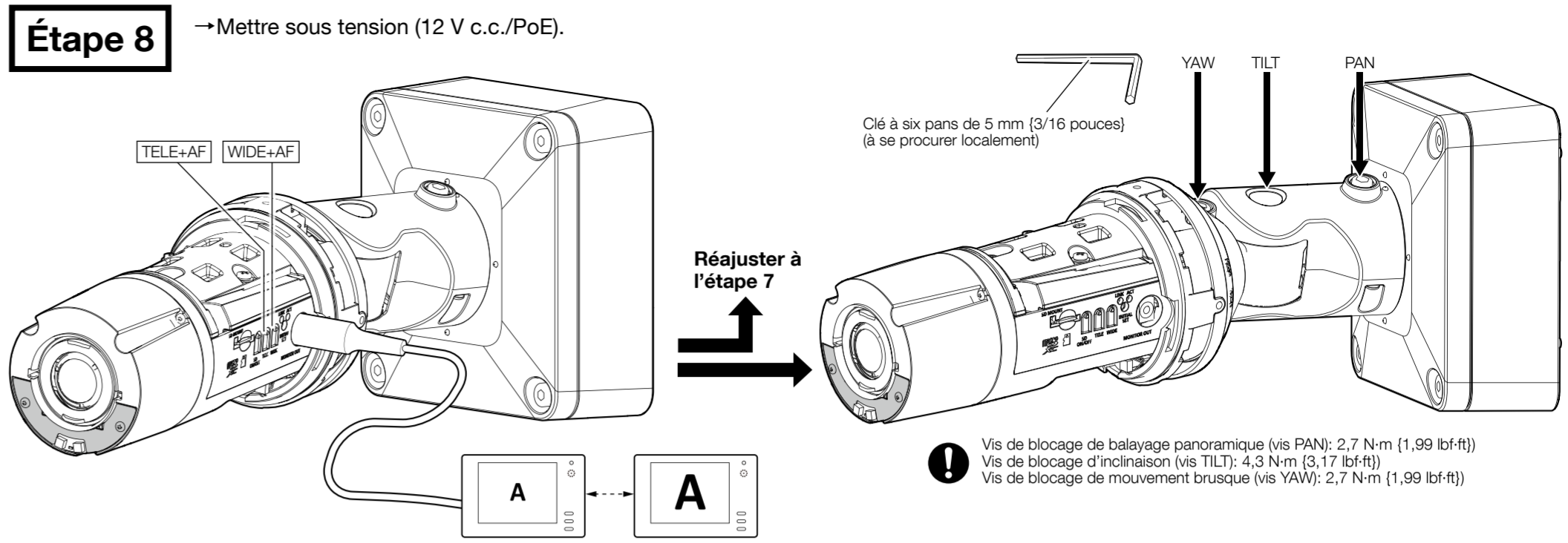
### Étape 6



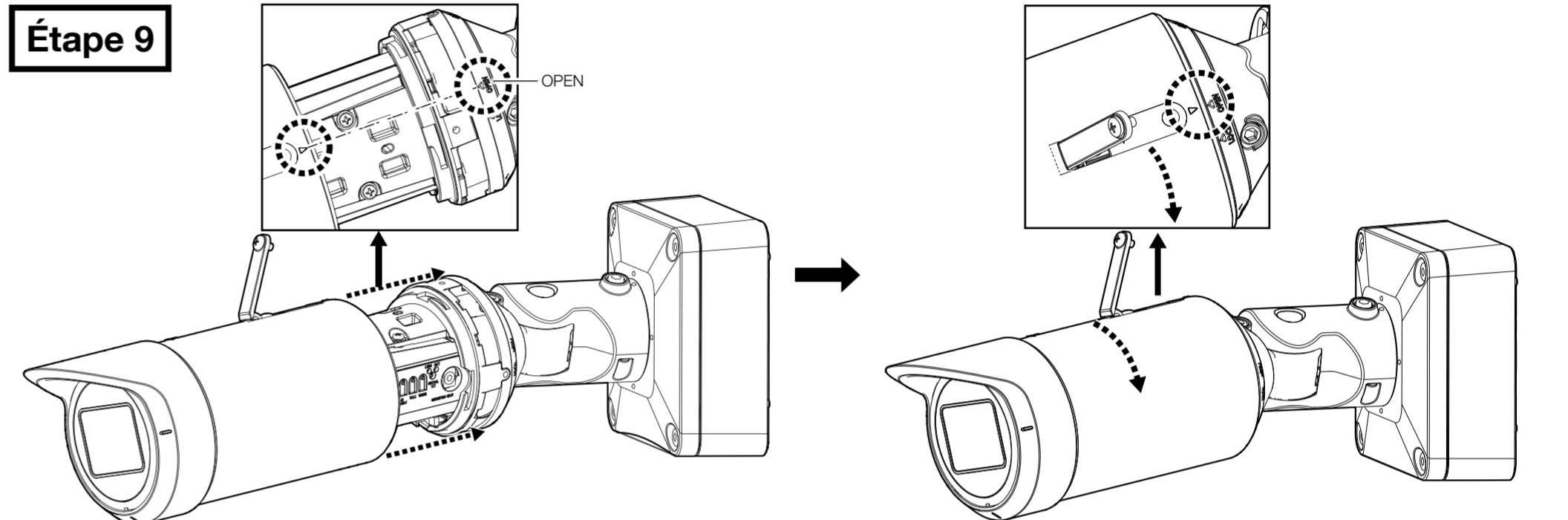
### Étape 7



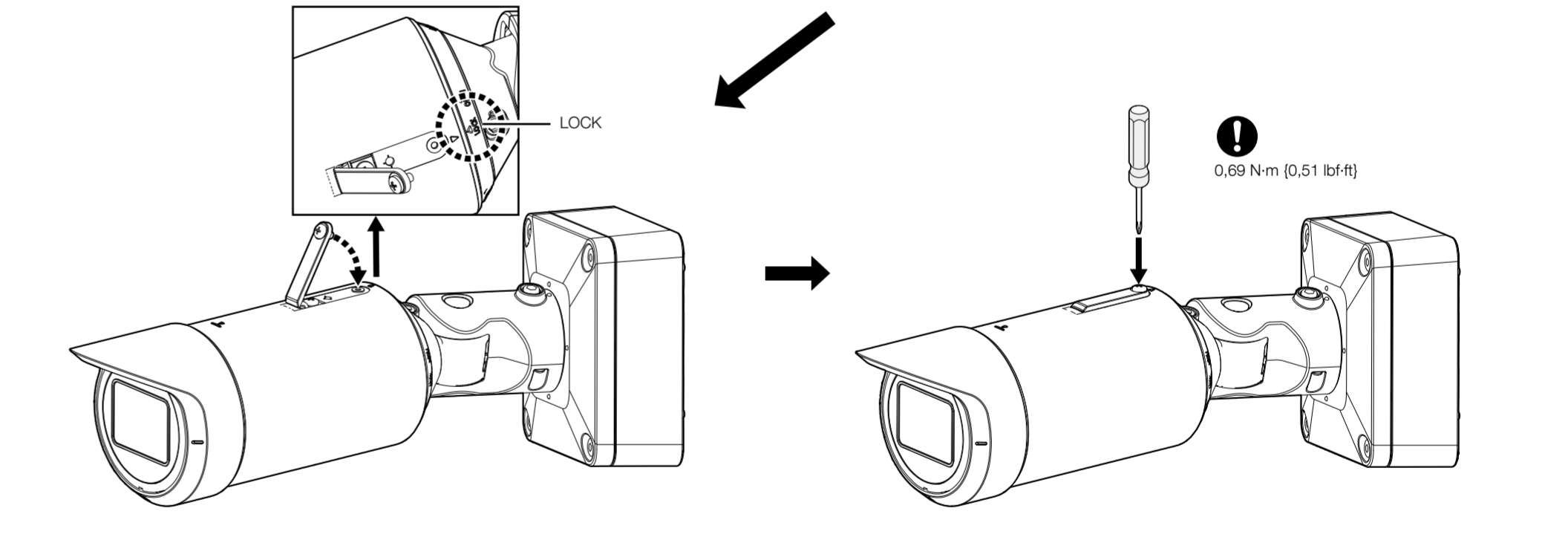
### Étape 8



### Étape 9



### Étape 10



### Étape 10

