

WJ-NX100/2E

Network Disk Recorder

Ver. 1.00

Panasonic i-PRO Sensing Solutions Co., Ltd.

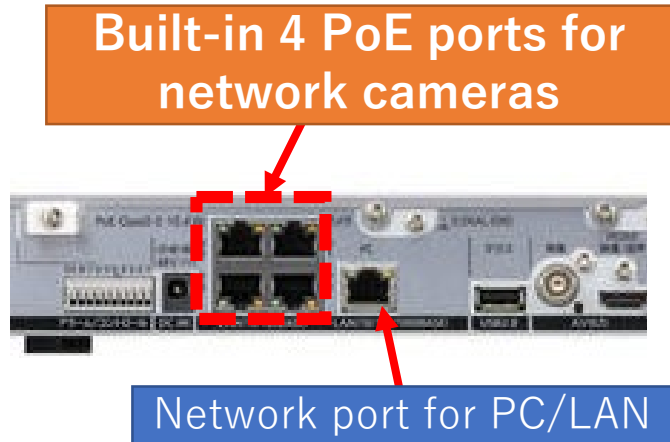


- ✓ Built-in PoE switch
- ✓ High compression recording and Secure communication
- ✓ PC-less non-VMS surveillance solution

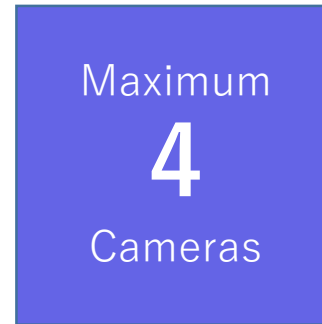
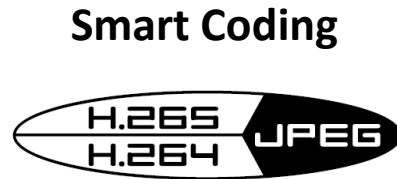


WJ-NX100/2E
Network Video Disk Recorder

- ✓ Built-in 4 PoE ports for camera, no need to prepare a separate PoE switch
- ✓ Space saving in a compact size (24% reduction in capacity vs WJ-NX200)



- ✓ Pre-installed 2.5" HDD 2 TB (Max. 4 TB)
- ✓ Significant reduction of storage space usage through H.265 and Smart Coding.
- ✓ 4ch. camera input. Supports H.265 / H.264 mixed recordings
- ✓ Pre-installed device certificates for secure communication



- ✓ No annual license updates required.
- ✓ Built-in GUI and HDMI (4K/FHD) outputs
- ✓ Automatic camera configuration
- ✓ Image search with thumbnails
- ✓ High-speed exporting records when using USB 3.0 storage

No
**Annual
License**
Required

HDMI[™]
HIGH-DEFINITION MULTIMEDIA INTERFACE
4K output

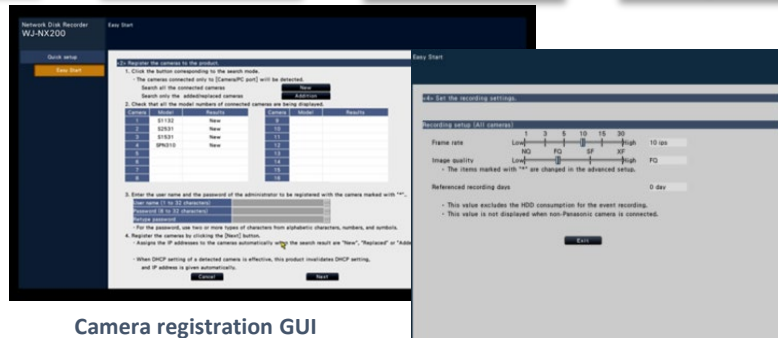
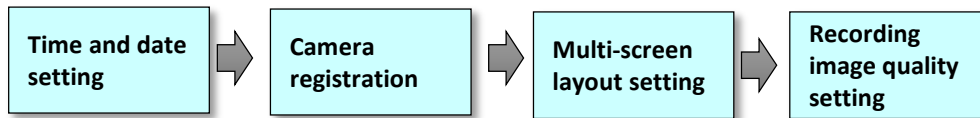
**Automatic
Camera
Configuration**

Image search
with
Thumbnails

High-speed export
3x faster
by USB 3.0 storage

• Automatic Security System configuration wizard

With only 4-steps “Easy start”, the setting of the recorder and cameras is completed in a few minutes from main display (without PC).



• Image search with thumbnail

Easy to find out image by thumbnail search



[Note]

- Multiple cameras are not supported
- It is necessary to select start date and time and display interval

System Configuration example

Up to 4 network cameras connected in built-in PoE port



ASM300 ver4.20 or later

LAN

WJ-NX100/2E

Monitor

Optional Software license

NXF02
Business
intelligence
kit

NXS01, NSX04
Secure
Communication
kits

Mouse

via WiFi or mobile network

Mobile app.

WJ-NX100/2E Specifications



Supported Cameras	Supported Cameras	Panasonic i-PRO series Network camera
	Supported Image Format	H.265,H.264,JPEG,
	Supported Audio Format	G.726 32kbps, AAC-LC
	Maximum Number of Cameras	4
Recording	Recording Mode	Event, Schedule, Emergency
	Frame Rate/Camera	Up to 60 ips
	Pre-alarm Recording	Up to 15 seconds *When the delivery speed from the network camera is less than 4 Mbps.
HDD	Type	2.5 inch Serial ATA HDD, Up to 2x HDDs can be installed.
	Maximum Capacity	Up to 4 TB will be supported. (Installed HDD : 2 TB x 1)
	RAID(Software RAID)	RAID 1
Network	Interface	For PC: 1x 10BASE-T / 100BASE-TX / 1000BASE-T (RJ45) For cameras: 4x 10BASE-T / 100BASE-TX (RJ45)
	Maximum Band Width	Total throughput : Max. 192Mbps Recording throughput : Max. 96Mbps, Output throughput : Max. 96Mbps
External Interface	Spot Output Connector	1x 1 V [p-p] / 75 (BNC)
	Monitor (HDMI) Connector	HDMI 4K UHD(3840x2160p) /30Hz, 4K UHD(3840x2160p) /25Hz, 1920x1080p /60Hz, 1920x1080p /50Hz, 1920x1080i /60Hz, 1920x1080i /50Hz
	Alarm Connector	Alarm input 1 – 2 (Non-voltage make contact input, +3.3 V pull-up Approx. 23 k) Alarm output (Open collector output, 24 V DC, -200 mA max.)
	USB connector	Front: USB3.0 x1 (copy), Rear: USB2.0 x1 (mouse)
General Specifications	Power Source/Power Consumption	DC48 V 1.7 A (AC adapter),
	Ambient Operating Temperature	+5 °C to +45 °C (41 °F to 113 °F)
	Ambient Operating Humidity	5 % to 90 % (no condensation)
	Dimensions (W x H x D)	280 mm(W) x 44 mm(H) x 212 mm(D) {11-1/32 inches (W) x 1-3/4 inches (H) x 8-11/32 inches (D)}, excluding rubber feet and projections)
	Weight	With 1 HDD: 1.9 kg {4.2 lbs}, With 2 HDDs: Approx. 2.0 kg {4.4 lbs.}

Software

Secure Communication license	WJ-NXS04(W)	Secure optional license for 4ch
	WJ-NXS01(W)	Secure optional license for 1ch

-PRO