

i-PRO Multi Sensor Network Cameras

WV-X8571N (4 x 4K Outdoor model) / **WV-S8531N** (4 x FHD Outdoor model)

Ver. 1.00

Panasonic i-PRO Sensing Solutions Co., Ltd.



The four repositionable lenses minimize blind spots and flexibly correspond to wide and variously shaped surveillance areas in cities.



New i-PRO camera with the four repositionable lenses with easy adjustment include a wide range tilt angle mechanism minimizes blind spots.

Visibility

- Wide range tilt angle adjustment mechanism minimize blind spots
- intelligent Auto  / Super dynamic 120dB
- High sensitivity with color night vision 

Data Compression

- H.265 compression with smart coding technology

Reliability

- Vandal resistant / IP66 compliant / Anti-corrosion

Data Security

- Secure communication with GlobalSign(Formerly Digicert) certification

Usability

- Continuous view assistance
- Support Fiber Optic Media Converter Unit (Option)
- Easy setting by connecting network via Wi-Fi connection

Wide range tilt angle adjustment mechanism

Four repositionable lenses capture objects with minimized blind spots.

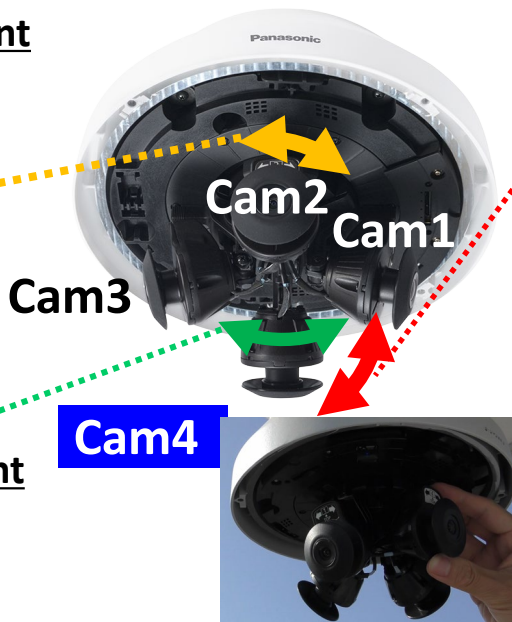
• PAN angle adjustment

Without fixing screws



• YAW angle adjustment

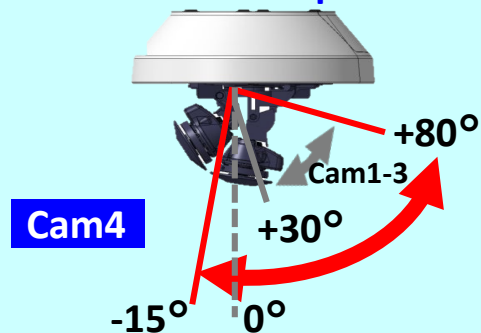
Without fixing screws



• Tilt angle adjustment

Without fixing screws

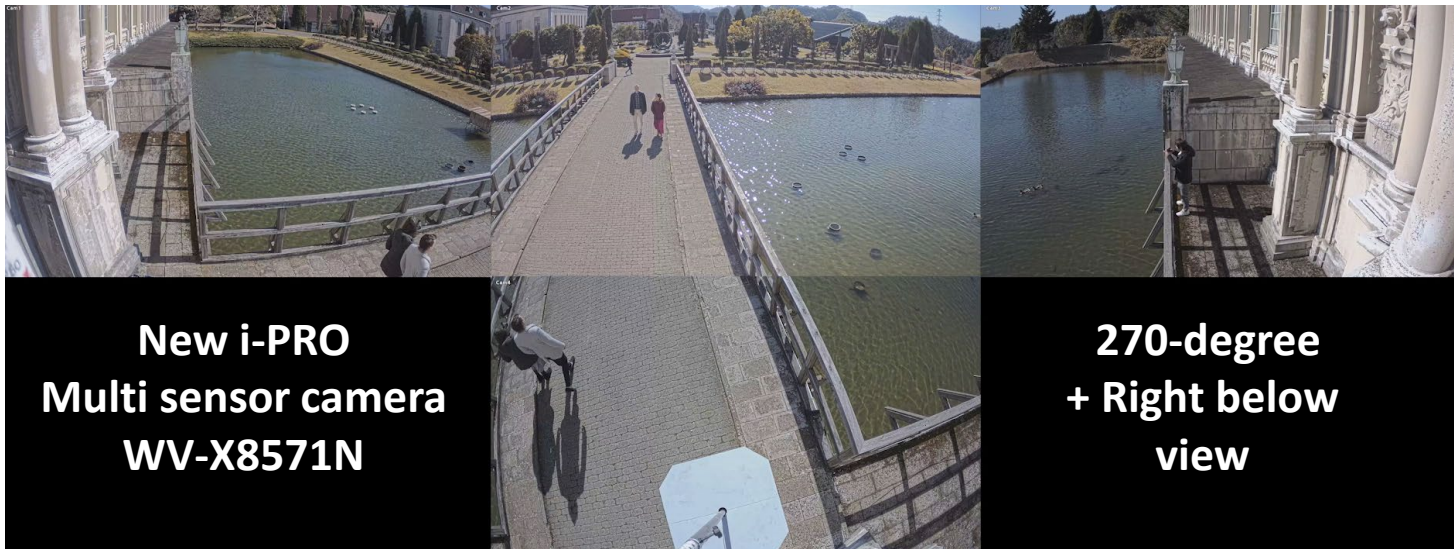
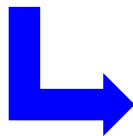
Cam4 can tilt up to -15 deg.



swingEye

■ Wide range tilt angle adjustment mechanism

Four repositionable lenses capture objects with minimized blind spots.

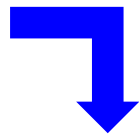


**New i-PRO
Multi sensor camera
WV-X8571N**

**270-degree
+ Right below
view**

■ Wide range tilt angle adjustment mechanism

Four repositionable lenses capture objects with minimized blind spots.



360-degree view



New i-PRO Multi sensor camera

WV-X8571N

■ H.265 compression with smart coding technology

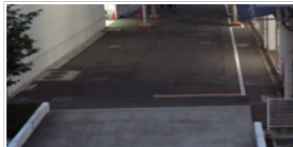
GOP control

Reduces encoding data by using p-frame in place of i-frame when no motion is detected.

With motion



Without motion



Auto-VIQS

Automatically determines areas with and without motion and reduce the data volume of those without motion



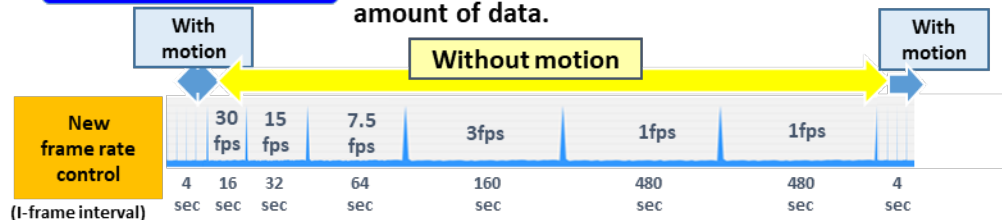
Low bit rate
(Higher
Compression)

High. bit rate
(Original compression)

*Simulated image

Frame control

Dynamically reduce the i-frame rate to reduce the amount of data.



Bit rate
reduction

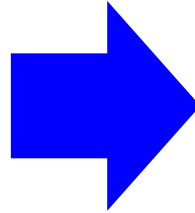
Conventional
H.264



i-PRO
H.265 + Smart coding
Max.95%

Value in bit rate depends on scene

Vandal resistant (IK10) under challenging environment



Vandal resistant test

Achieve high endurance and long life usage under extreme conditions

Dustproof Test



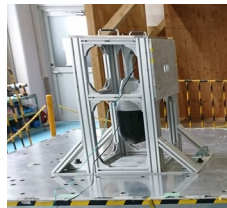
High-Temperature Test



Pressure Test



Earthquake Test



**Waterproof Test
IP66**



IP6K9K



Lifetime Test



Thunder Test



Static Electricity Test



Drop Test



Box Shaking Test



Vibration Test



Achieve high endurance and long life usage under extreme conditions

■ Vandal Resistant

- ✓ Highly impact resistant
- ✓ IEC 62262 IK10



■ Anti-corrosion screw

Adoption of Anti-corrosion screws prevents to corrosion and improves maintainability.

■ Water & Dust Resistant

- ✓ IP66 (IEC60529)
- ✓ Type 4X(UL50E)
- ✓ NEMA 4X compliant

■ Wind Resistance

Operates under up to 40 m/s
(approx. 89 mph) environment

Secure communication with GlobalSign(Formerly Digicert) certification



Vulnerability Assessment

- 3rd party assessment and penetration tests made to achieve higher security standards



GlobalSign(Formerly Digicert) Device Certification

- Pre-installed GlobalSign Certification
- Video tampering detection



End-to-End Data Encryption

- Support full encryption communication
- Camera encryption recording on-the-edge



FIPS140-2 CAVP compliant

(Federal Information Processing Standardization)

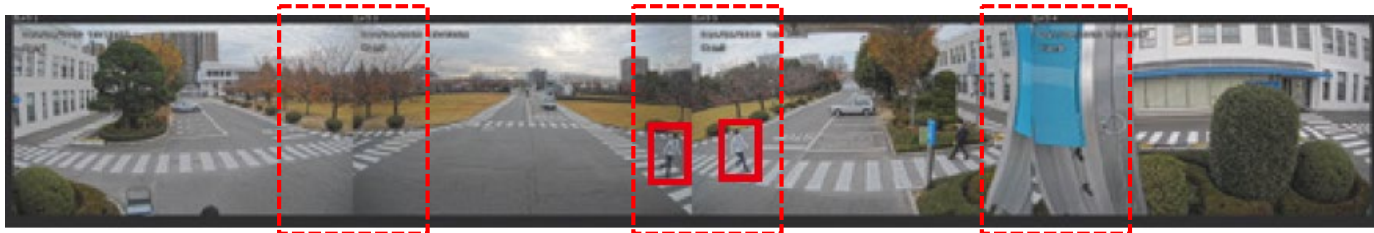
- *Using encryption module standardized by FIPS publication 140-2



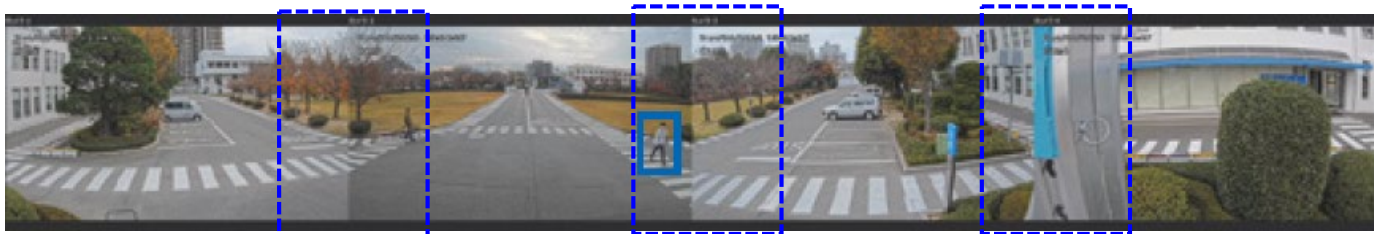
■ Continuous view assistance

After determining the monitor angle, set the lens to the specified position and the cameras will automatically motorized zoom and focus to reduce the overlap of images from each camera.

Conventional
Multi sensor
camera



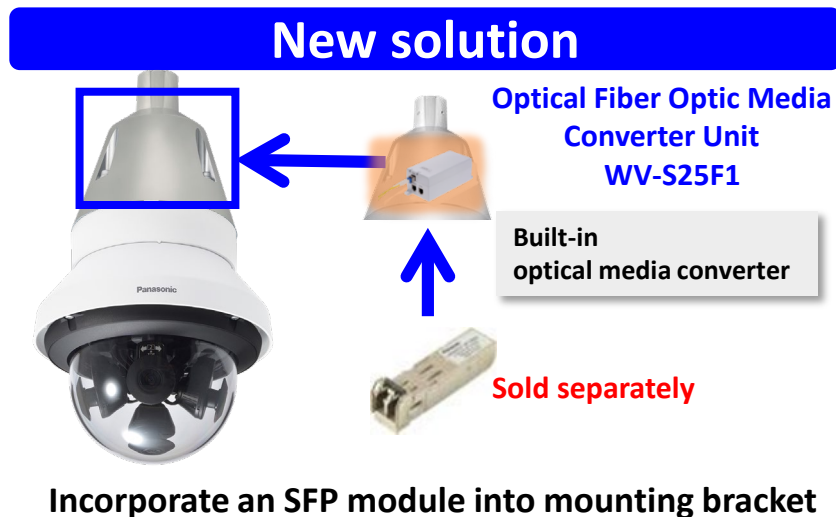
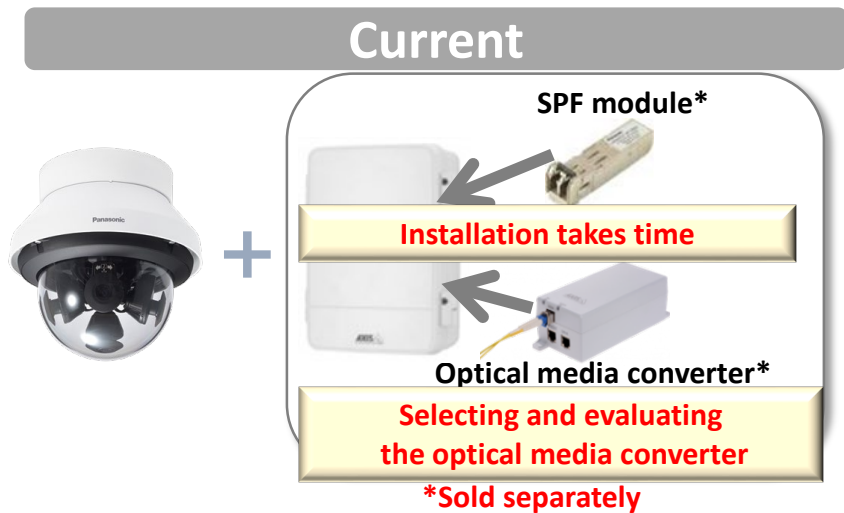
New i-PRO
cameras
WV-X8571N
/S8531N



To use motorized zoom and focus to automatically adjust the field of view.

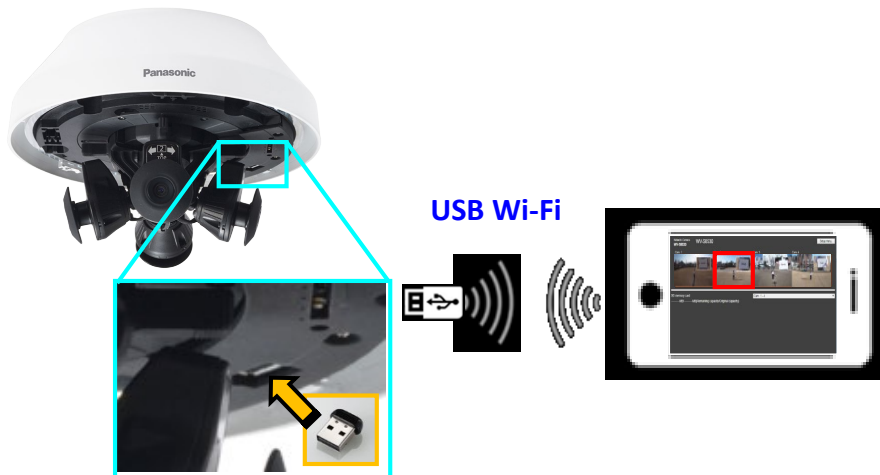
■ Support Fiber Optic Media Converter Unit (Option)

The optional optical interface mounting bracket with optical media converter reduces installation time and enables construction of a long distance monitoring system without spending time on selecting and evaluating the optical media converter.



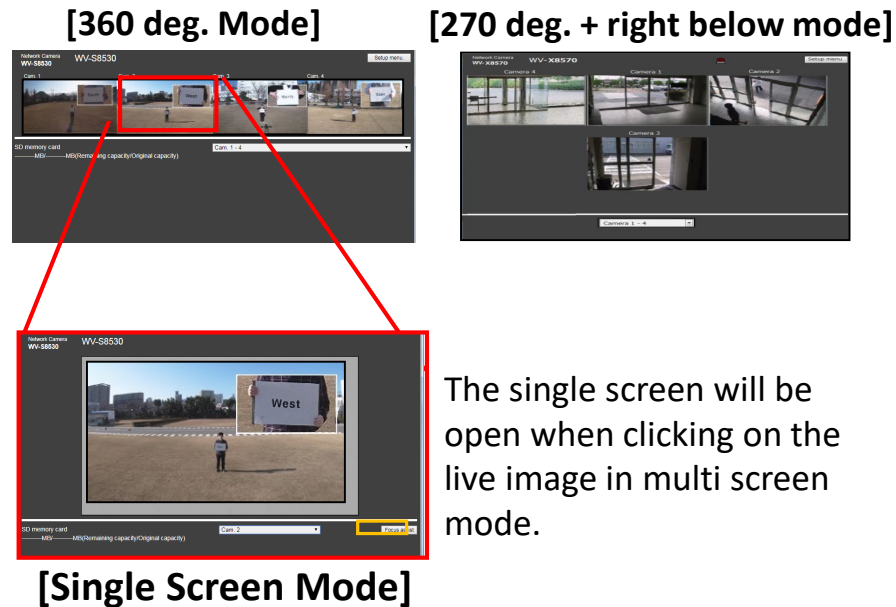
■ Easy setting by connecting network via Wi-Fi connection

Installation time can be reduced by confirming live image and adjusting viewing angle with smartphone or tablet device via Wi-Fi connection.



Insert USB Wi-Fi device* to the USB terminal on multi-sensor camera

*Purchase compatible USB Wi-Fi device separately.



The single screen will be open when clicking on the live image in multi screen mode.

Specifications (4 x 4K models)



		WV-X8570N	WV-X8571N
Image sensor		1 / 1.8" type CMOS	
Max. video resolution (pixel)		3840 x 2160 x 4 cameras	
Max. frame rate		15fps / 12.5fps	
Minimum Illumination *Shutter speed 1/30s	Color	0.12lx @F1.6, 0.008 lx @ shutter speed 16/30	
	B/W	0.05lx @F1.6, 0.003 lx @ shutter speed 16/30	
Angular Field of View : Horizontal/Vertical		(16:9 mode) 97° / 53°	
Adjusting angle		Camera 1, 2, 3 : Horizontal (PAN) angle : 360° , Vertical (TILT) angle : +30° to +80° , Azimuth (YAW) angle : ±50° Camera 4 : Horizontal (PAN) angle : 360° , Vertical (TILT) angle : -15° to +80° , Azimuth (YAW) angle : ±50°	
intelligent Auto/ Super Dynamic/Smart coding		intelligent Auto / Super Dynamic (108dB) / Smart Coding	intelligent Auto / Super Dynamic (120dB) / Smart Coding
Continuous view assistance		-	yes
Audio Compression		G.726, G.711, AAC-LC	
SD memory card slot		1 slot (SDXC/SDHC/SD)	
Zoom Ratio		Digital zoom (x1, x2, x4)	
External I/O Terminals		ALARM IN 1(Alarm input 1/ Black & white input/ Auto time adjustment input) (x1), ALARM IN 2 (Alarm input 2/ ALARM OUT) (x1), ALARM IN 3 (Alarm input 3/ ALARM OUT/ AUX OUT) (x1)	
Secure communication		IP66(IEC60529), Type 4X(UL50E), NEMA 4X compliant, 50J(IEC60068-2-75 compliant), IK10(IEC 62262), ClearSight coating	
Environmental		-40° C to +60° C {-40° F to +140° F}, {Power On range : -20° C to +60° C (-4° F to +140° F)}	
External I/O Terminals		ø230 mm x 196 mm (H) {ø9-1/16 inches x 7-23/32 inches (H)}, / Approx. 2.8 kg {6.17 lbs}	

Specifications (4 x FHD models)



		WV-S8530N	WV-S8531N
Image sensor		1 / 3" type CMOS	1 / 2.8" type CMOS
Max. video resolution (pixel)		1920 x 1080 x 4 cameras	
Max. frame rate		30fps / 25fps	
Minimum Illumination *Shutter speed 1/30s	Color	0.09lx @F2.2, 0.006 lx @ shutter speed 16/30	0.05lx @F2.0, 0.003 lx @ shutter speed 16/30
	B/W	0.04lx @F2.2, 0.003 lx @ shutter speed 16/30	0.03lx @F2.0, 0.002 lx @ shutter speed 16/30
Angular Field of View : Horizontal/Vertical		(16:9 mode) 53° - 99° / 30° - 54° (4:3 mode) 44° - 81° / 33° - 60°	(16:9 mode) 45° - 104° / 25° - 58°
Adjusting angle		Camera 1, 2, 3 : Horizontal (PAN) angle : 360° , Vertical (TILT) angle : +30° to + 80° , Azimuth (YAW) angle : ± 50° Camera 4 : Horizontal (PAN) angle : 360° , Vertical (TILT) angle : -15° to + 80° , Azimuth (YAW) angle : ± 50°	
intelligent Auto/ Super Dynamic/Smart coding		intelligent Auto / Super Dynamic (108dB) / Smart Coding	intelligent Auto / Super Dynamic (120dB) / Smart Coding
Continuous view assistance		-	yes
Audio Compression		-	
SD memory card slot		1 slot (SDXC/SDHC/SD)	
Zoom Ratio : Optical / Digital		1.8x (Manual zoom / Manual focus) / x1, x2, x4	2.5x (Motorized zoom / Motorized focus) / x1, x2, x4
External I/O Terminals		-	
Secure communication		IP66(IEC60529), Type 4X(UL50E), NEMA 4X compliant, 50J(IEC60068-2-75 compliant), IK10(IEC 62262), ClearSight coating	
Environmental		-40° C to +60° C {-40° F to +140° F}, {Power On range : -20° C to +60° C (-4° F to +140° F)}	
External I/O Terminals		ø230 mm x 196 mm (H) {ø9-1/16 inches x 7-23/32 inches (H)}, / Approx. 2.7 kg {5.95 lbs}	

It shows the maximum distance at which a camera's tele and wide can meet DORI. *1

*This value does not indicate the performance of the camera

Resolution 2192 × 2192		Distance to the object in the center of the image		Coverage radius when mounted at a height of 3 m (10 ft)	
		Distance (m)	Distance (ft)	Distance (m)	Distance (ft)
Detect	25ppm / 8ppf	30.0	98.4	92.7	304.2
Observe	62.5ppm / 19ppf	12.0	39.4	37.1	121.7
Recognize	125ppm / 38ppf	6.0	19.7	18.5	60.8
Identify	250ppm / 76ppf	3.0	9.8	9.3	30.4

WV-S8531N



Resolution 2992 × 2992		Distance to the object in the center of the image		Coverage radius when mounted at a height of 3 m (10 ft)	
		Distance (m)	Distance (ft)	Distance (m)	Distance (ft)
Detect	25ppm / 8ppf	67.9	222.9	-	-
Observe	62.5ppm / 19ppf	27.2	89.2	-	-
Recognize	125ppm / 38ppf	13.6	44.6	-	-
Identify	250ppm / 76ppf	6.8	22.3	-	-

WV-X8571N



*1 It is calculated with the camera installed horizontally.

WV-S8531N / X8571N



Fiber Optic Media Converter Unit



WV-S25F1
(For WV-X8571N)

		Ceiling			
		1	2	3	4
Combination	WV-Q105A 	WV-QJB501-W 	WV-QCL501-W 	3rd. parties pipe 	
			WV-QSR502A-W 	WV-QSR502A-W 	
				WV-QAT500-W 	

		Wall	Pole	Corner
		1	1	1
Combination	WV-QWL501-W 	WV-QPL500-W 	WV-QCN500-W 	
	WV-QSR502A-W 	WV-QWL501-W WV-QSR502A-W 	WV-QWL501-W WV-QSR502A-W 	

Those cameras are suitable under the extreme conditions

- ✓ Intersection
- ✓ Station, Airport
(Concourse, Runway)
- ✓ Building periphery
- ✓ Park
- ✓ Plaza
- ✓ Parking lot and more.



-PRO