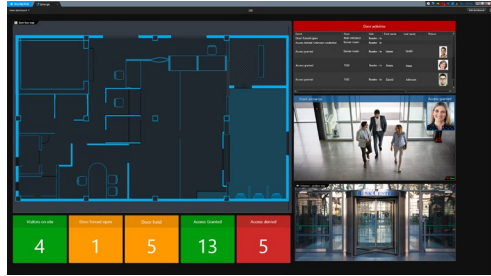


**Integrating FacePRO  
with the Genetec Synergis Card Access Control**

**Ver. 1.02**

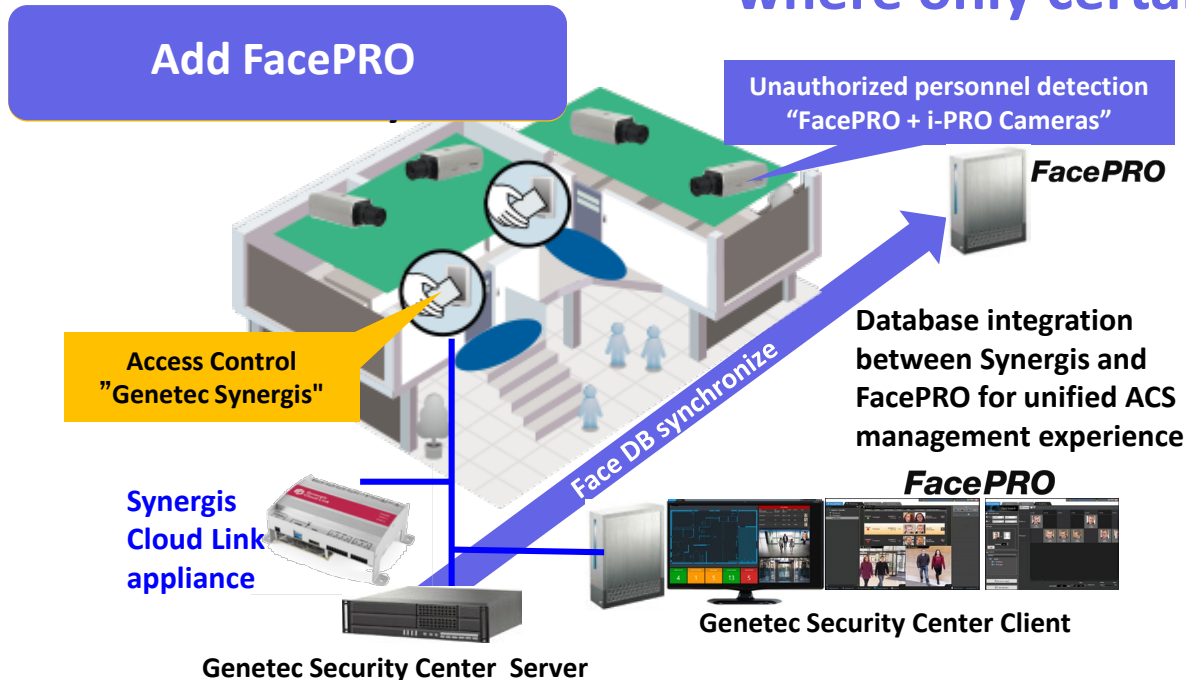
Panasonic i-PRO Sensing Solutions Co., Ltd.

# Detecting imposter activity using “FacePRO” and “Genetec Synergis Card Access Control ” database integration



**Enables strengthen security  
for people who are not allowed in specific areas**

## Enables to detect suspicious persons who has entered an area where only certain persons are allowed.



In addition to Synergis Card Access control, FacePRO with i-PRO camera can detect unauthorized personnel even with masks on who has entered the facility using someone else ID card.

- At the gate : Card Access Control
- Inside the gate :  
Unauthorized personnel detection

Enables to detect suspicious persons who has entered an area where only certain persons are allowed.

**Before**

Genetec Security Center.



Door Control

Security Center Synergis.

Zone Control

No

Possible to enter using someone else ID card

**After**

Genetec Security Center.



Door Control

Security Center Synergis.

Zone Control

FacePRO

Unregistered Face Detection

Be detected by unregistered detection of FacePRO after entering



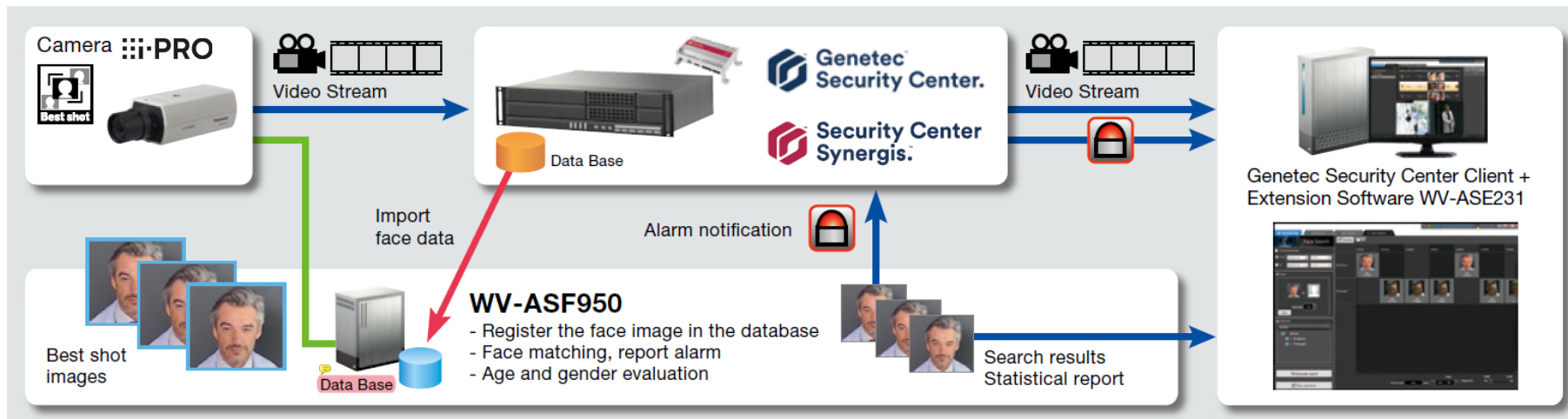
i-PRO

X



DB synchronize

People who enter authorized area using someone's ID or by following behind someone with access can also be detected with FacePRO's unregistered face detection function



<b>FacePRO</b>	<b>Registered Face Detection</b>	<b>Unregistered Face Detection*1</b>
Face matching speed	At 1 second in 30,000 registered faces *2	<b>At 3 second in 30,000 registered faces*2</b>
Max. number of face in matching list	Up to 30,000 faces*3	
Face searching speed in database	3 seconds per 5 million faces*4	
Max. number of face history	Up to 10 million items	
Range of angles	Horizontal range : -45° to +45° , Vertical range : -30° to +30°	
Minimum size of the face image	30 pixel (Eye Distance : 15 pixel)	
Face with sunglass / surgical mask	Yes / Yes	
Registered face matching	Yes	Yes *1
Unregistered face matching	No	Yes
Max. number of connected camera	10 cameras is suitable, up to 20 cameras per 1 face matching server*5	Up to 10 cameras per 1 face matching server*5
Max. number of servers	100 servers (10 primary + 90 secondary)	
Max. number of client PC that can be linked with the alarm	WV-ASM300 : 16	

\*1 **Depending on settings, Unregistered Face Detection and Registered Face Detection can be used simultaneously.**

\*2 **From receiving the face thumbnail to matching in face matching server.**      \*3 **Two Additional Face Registration Kits WV-ASFE951 are necessary.**

\*4 **The best case when the time range is narrowed down and the number of search result is 100 faces. Depending on the search conditions, the search time may take several minutes.**

\*5 **Deploying plural face servers in a system is acceptable.**

## ■ Server/Hardware

### Facial Recognition System FacePRO WV-ASF950

1. CPU Intel® Xeon® or Core™ i7 series 3.40 GHz or faster (4-core 8-thread or better)
2. Memory 32 GB or more
3. HDD 1 TB or more
4. Graphic NVIDIA® QUADRO® P5000, NVIDIA® QUADRO® RTX5000
5. Power supply 600 W or more
6. OS Microsoft® Windows® 10 Professional RS5 (64 bit),  
Microsoft® Windows Server® 2019 Standard Edition



## ■ Server/Hardware

### Genetec Security Center Server + Extension Software WV-ASE231

1. CPU Intel® Xeon® E5640 2.66 GHz or better
2. Memory 16 GB or more
3. HDD 80 GB for OS and Security Center applications
4. Graphic Standard SVGA video card
5. Network I/F : 1000 Mbps
6. OS Microsoft® Windows® 10 Pro RS4(64bit) ,  
Microsoft® Windows Server® 2016 Standard Edition with update English/French

### Genetec Security Center Client + Extension Software WV-ASE231

1. CPU Intel® Core™ i7-4770 or better
2. Memory 8GB or more
3. HDD 120 GB for OS and Security Center applications
4. Graphic NVIDIA® QUADRO® K620 2 GB video card
5. Network I/F : 100 / 1000 Mbps
6. OS Microsoft® Windows® 8.1 Pro (64bit),  
Microsoft® Windows® 10 Pro RS4(64bit) English/French



## ■ Management Software+ Extension software

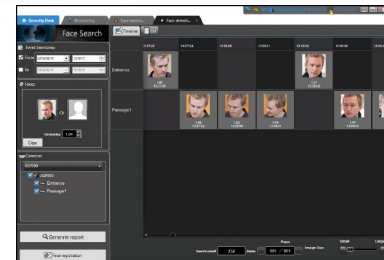
The unified security platform from Genetec Inc. :

**Genetec Security Center V5.8/V5.9 + WV-ASE231 Ver. 3.00 or later**

- \*Five GSC-1SDK-PANASONIC-FaceMatch per client are necessary in order to integrate with Genetec Security Center.  
In case of the integration with the Synergis access control system, an additional one GSC-1SDK-PANASONIC-FaceMatch is necessary.
- \*WV-ASF950 does not support expansion server configuration of Genetec Security Center.



Genetec Security Center Client +  
Extension Software WV-ASE231



## ■ Network Camera for face detection

WV-S1132 / WV-S1131 / WV-S1112 / WV-S1111 / WV-S2531LTN \*<sup>1</sup> / WV-S6130 /  
WV-SPN631\*<sup>2</sup> / WV-SPN611\*<sup>2</sup>/ WV-SPN531A / WV-SPN311A / WV-SPN310A /  
WV-SP305 / WV-SFV631LT \*<sup>3</sup> / WV-SC385 \*<sup>3</sup>

\*<sup>1</sup> Although this is the outdoor model, it can be used as face matching camera for indoor only.

\*<sup>2</sup> The Optional IR-LED(WV-SPN6FRL1) cannot be installed with any of the tested Lenses.

\*<sup>3</sup> After fixing the angle of view, if you control the camera with PTZ operation, the face matching function will not work properly. In this case, set the view of angle properly again by using the preset position function.

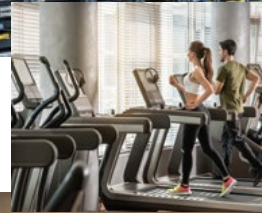


## ■ Facial Recognition System Software

WV-ASF950 Ver.3.10 or later

Those cameras are suitable under the extreme conditions

- ✓ Server room / R&D facility / Safe deposit box
- ✓ Court
- ✓ Fitness Club
- ✓ Casino
- ✓ Airport  
and more.



-PRO