

i-PRO FHD IR PTZ Camera With Heavy Salt Damage Resistance

WV-X6533LNS (Outdoor 40x optical zoom model)

WV-S6532LNS (Outdoor 22x optical zoom model)

Ver. 1.00

Panasonic i-PRO Sensing Solutions Co., Ltd.



With Salt-air Corrosion Resistant supports a variety of coastal areas security for gulf monitoring and disaster countermeasures



Gulf Guard



**Disaster / Tsunami
Measures**



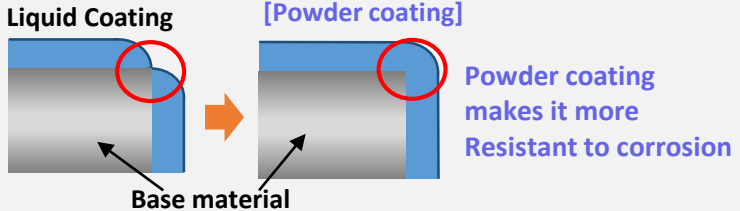
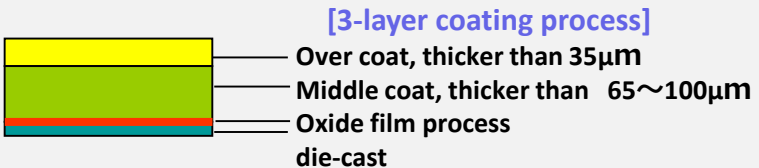
**Coastal logistics
warehouse**



**Flood gate
monitoring**

Salt-Air Corrosion Resistant Body are able to use in in a heavy salt damaging environment.

■ Salt-air corrosion resistant coating for the part of aluminum die-cast



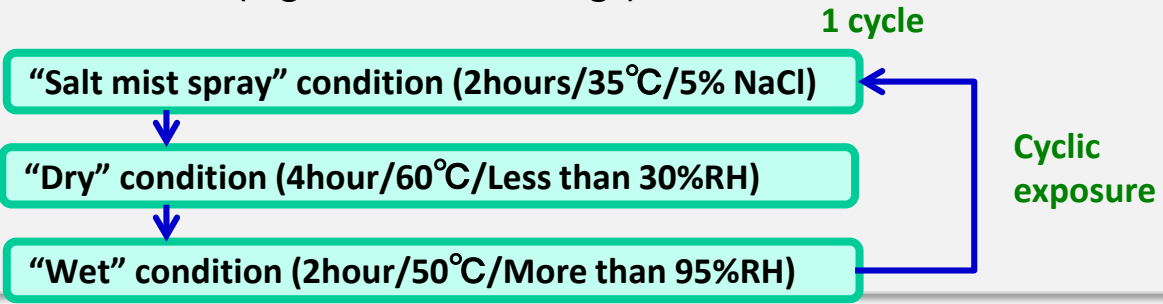
■ Corrosion-resistant screws

Prevention from fixation at maintenance. (e.g. Geomet® coatings)



■ ISO14993 Compliant

International Standard specifies test procedure of accelerated corrosion tests



i-PRO IR PTZ cameras with Heavy Salt Damage Resistance

performs under heavy salt air condition

Visibility

- View objects in dark condition with IR LED with new auto focus
- High powered 40x optical zoom / Intelligent zoom stabilization
- Dehumidification and defrosting with the new defroster
- intelligent Auto **iA** / 30 degree elevation angle / ClearSight coating

Data Compression

- H.265 compression with improved smart coding technology

Video Data Analytics

- Bundled the i-VMD (intelligent Video Motion Detection) + Scene change detection

Reliability

- Salt damage resistant / Vandal resistant / IP66 compliant / IK10

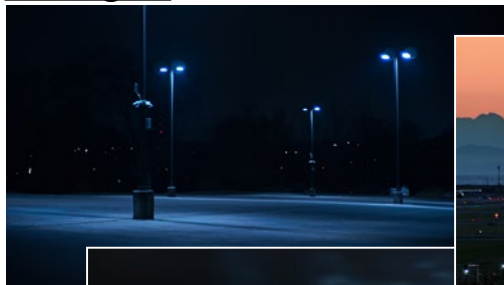
Data Security

- Secure communication with Digicert certification

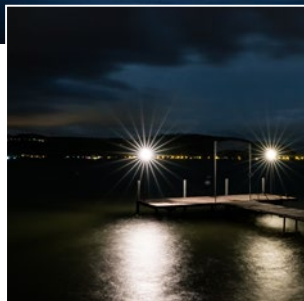
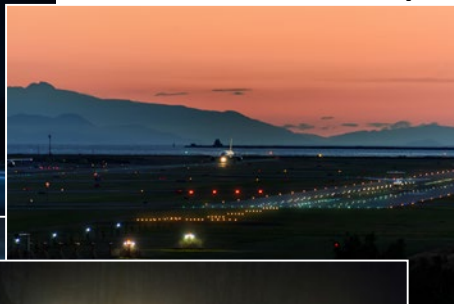


How to achieve wide area surveillance even in dark environments such as night?

Parking lot



Airport



Lake



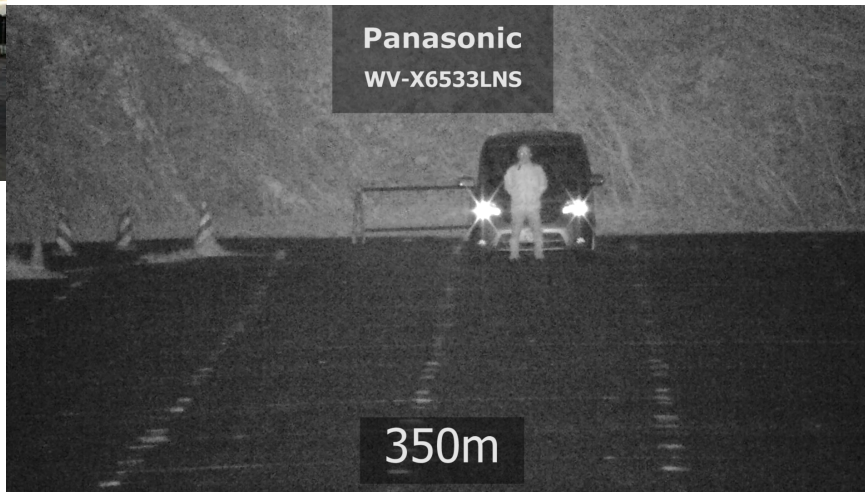
Park



Built-in IR LED and high magnification optical zoom in new PTZ cameras to realize wide area surveillance at night

■ View objects in dark conditions

Enable to see an object at max.350m(approx.1150ft.)away
with built-in IR-LED lighting even in a 0 lux environment.

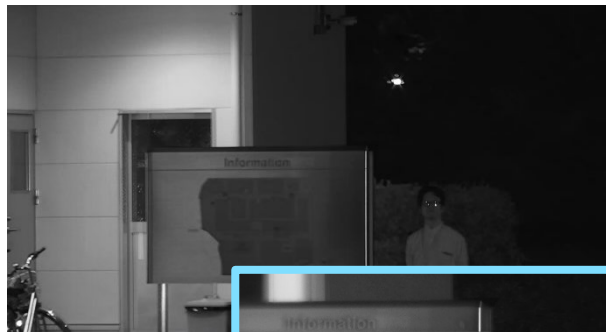


i-PRO IR PTZ
camera
WV-X6533LNS

■ View objects in dark conditions

Improve visibility and low-light environments by mixing visible and IR LED lighting through a new auto focus with visible light cut filter.

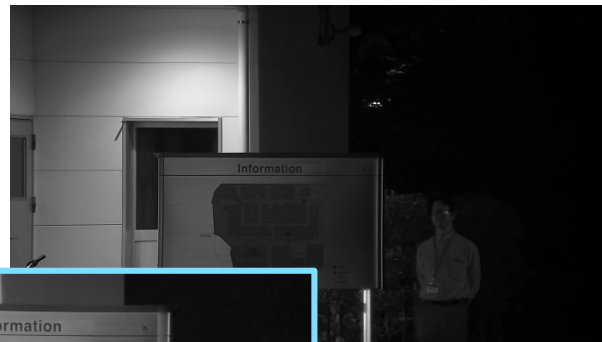
Other leading brand camera



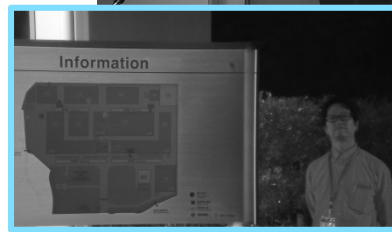
Zoom in



i-PRO IR PTZ camera WV-X6533LNS



Zoom in

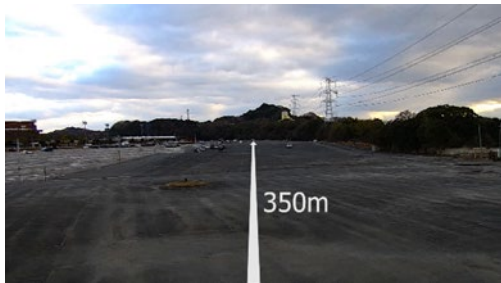


Under visible light

New Auto Focus

■ High powered 40x optical zoom

40x optical zoom function enables to survey further,
and clearly see objects at long distances.



i-PRO IR PTZ camera
WV-X6533LNS

■ Intelligent zoom stabilization

Enables the capture of a stabilized image

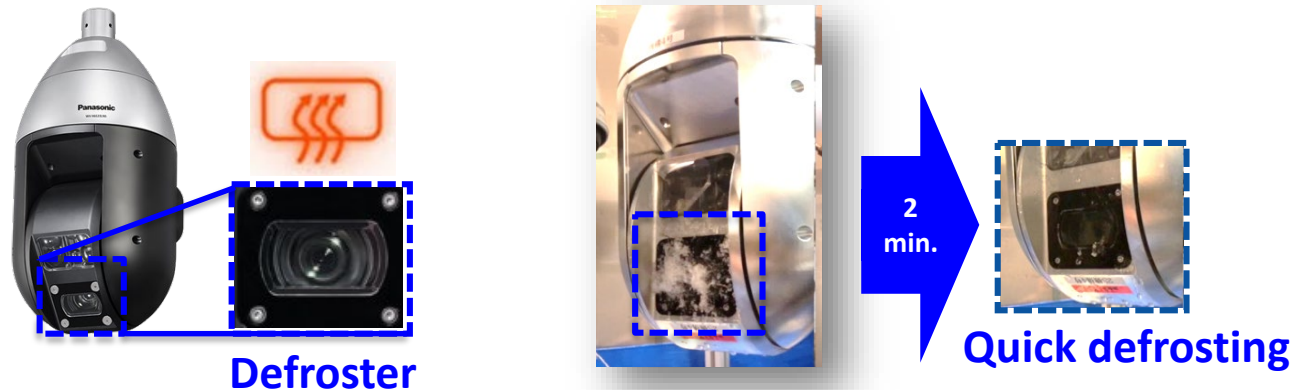
even when the object is located a long distance away by absorbing vibrations.



■ Dehumidification and defrosting with the new defroster

Enables to capture clear image

with the new defroster under extreme environments.



By the defroster on the transparent cover part on the front of the lens, against temperature drop inside the camera, the temperature inside the camera is kept properly to prevent dew condensation.

■ intelligent Auto (iA)

iA monitors scene dynamics and motion to adjust key camera settings automatically all in real-time, reducing distortion such as motion blur on moving objects.



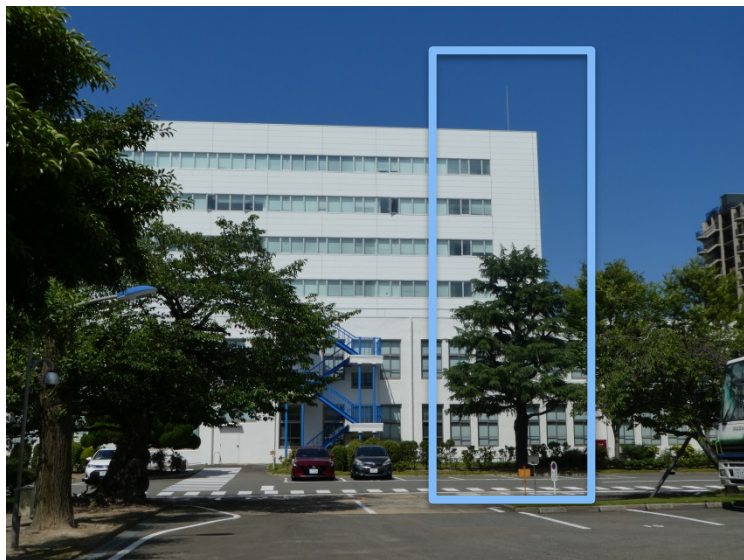
iA OFF



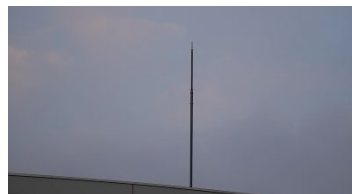
iA ON

■ 30 degree elevation angle

Enables to monitor dam release, landslide, iron tower and slope road by using with 30 degrees elevation angle from low installation location.



Smart phone camera image



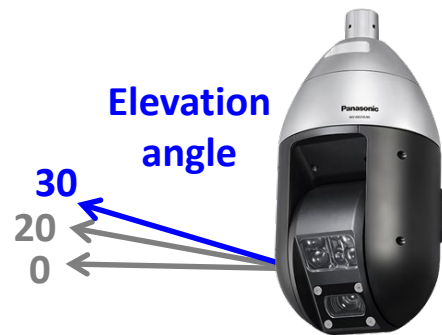
30 degree



20 degree



0 degree



■ ClearSight coating

The specially coated (ClearSight) cover resists water, stains, and dust accumulation, enabling the capture of clear images even in rainy environments, reducing the need for periodic maintenance.

Without
any special
coating



With
ClearSight
coating



It shows clear images even if
IR-LEDs are on when it is rain



With
ClearSight coating

Without
any special coating

■ H.265 compression with smart coding technology

GOP control

Reduces encoding data by using p-frame in place of i-frame when no motion is detected.

With motion



Without motion



Auto-VIQS

Automatically determines areas with and without motion and reduce the data volume of those without motion



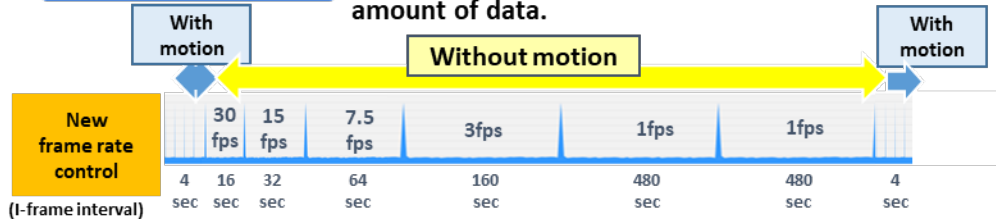
Low bit rate
(Higher
Compression)

High. bit rate
(Original compression)

*Simulated image

Frame control

Dynamically reduce the i-frame rate to reduce the amount of data.



Bit rate
reduction

Conventional
H.264



i-PRO
H.265 + Smart coding
Max.95%

Value in bit rate depends on scene

Achieve high endurance and long life usage under extreme conditions

Dustproof Test



High-Temperature Test



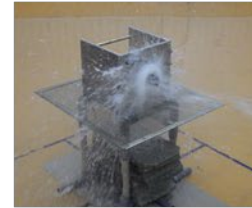
Pressure Test



Earthquake Test



**Waterproof Test
IP66**



IP6K9K



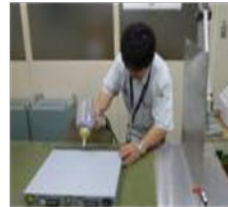
Lifetime Test



Thunder Test



Static Electricity Test



Drop Test



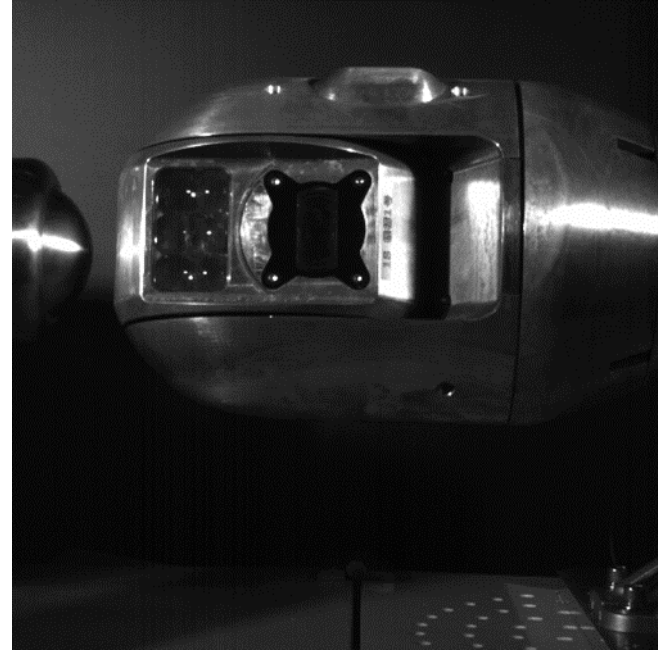
Box Shaking Test



Vibration Test



Vandal resistant (IK10) under challenging environments.



■ High Durability Mechanism for PTZ Cameras

The precise gear drive allows longer life than belt-drive and reduce replacement & field dispatch costs.



Around 4 times longer lifespan than conventional rubber belt drive

Secure communication with DigiCert certification



Vulnerability Assessment

- 3rd party assessment and penetration tests made to achieve higher security standards



DigiCert Device Certification

- Pre-installed DigiCert Certification
- Video tampering detection



End-to-End Data Encryption

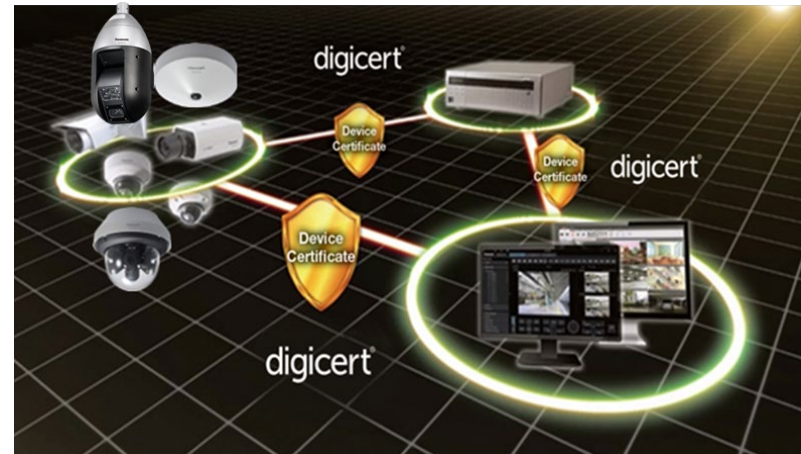
- Support full encryption communication
- Camera encryption recording on-the-edge



FIPS140-2 CAVP compliant

(Federal Information Processing Standardization)

- *Using encryption module standardized by FIPS publication 140-2





Specifications



	WV-S6532LN	WV-S6532LNS	WV-X6533LN	WV-X6533LNS
Image sensor	1 / 2.8 type CMOS			
Zoom ratio	22x		40x	
Max. frame rate / Max. resolution	60 fps / 4:3 mode 2048 × 1536 (Used by super resolution techniques)			
Minimum Illumination *Shutter speed 1/30s	Color	0.015lx @F1.6, 0.001 lx @ shutter speed 16/30		
	B/W	0.006lx @F1.6, 0.0004 lx @ shutter speed 16/30, 0 lx @ IR		
Angular Field of View *16:9 mode	Horizontal	3.4° (Tele) – 66° (Wide)		1.9° (Tele) – 66° (Wide)
	Vertical	2.0° (Tele) - 39° (Wide)		1.1° (Tele) - 39° (Wide)
intelligent Auto / WDR / Smart coding	Yes / Super Dynamic (144dB) / Yes			
Adjusting Angle : PAN / TILT	360° endless / -30° to 210°			
Panning & Tilting speed : Manual, Preset	0.065° to 150° /s, 300° /s			
IR LED	100m(approx.330ft.) : AC24V/60WPOE/PoE+		350m(approx.1150 ft.) : AC24V/60WPOE /PoE+(150m)	
Day /Night function	IR cut filter ↔ visible light cut filter			
Image stabilizer	Intelligent zoom stabilization (Electric Image Stabilization)			
Fiber Optic Media Converter Unit (Option)	Yes	-	Yes	-
ClearSight	Yes			
Salt-air Corrosion Resistant	-	Yes	-	Yes
Environmental	IP66, Type 4X(UL50E), NEMA 4X compliant, 50J (IEC60068-2-75 compliant), IK10			
Power Source	AC24V / PoE+ / Tested POE Injector (60W)			
Dimension (mm)	ø226 x 415 (H)			

It shows the maximum distance at which a camera's wide and tele can meet DORI. *1

*This value does not indicate the performance of the camera

 WV-X6533LNS	Resolution 1920 × 1080		Wide 66°		Tele 1.9°	
			Distance (m)	Distance (ft.)	Distance (m)	Distance (ft.)
Detect	25ppm / 8ft.		59.13	194.00	2315.74	7597.58
Observe	62.5ppm / 19ft.		23.65	77.60	926.30	3039.03
Recognize	125ppm / 38ft.		11.83	38.80	463.15	1519.52
Identify	250ppm / 76ft.		5.91	19.40	231.57	759.76
 WV-S6532LNS	Resolution 1920 × 1080		Wide 66°		Tele 3.4°	
			Distance (m)	Distance (ft.)	Distance (m)	Distance (ft.)
Detect	25ppm / 8ft.		59.13	194.00	1293.83	4244.85
Observe	62.5ppm / 19ft.		23.65	77.60	517.53	1697.94
Recognize	125ppm / 38ft.		11.83	38.80	258.77	848.97
Identify	250ppm / 76ft.		5.91	19.40	129.38	424.49

*1 It is calculated with the camera installed horizontally.

Salt-air corrosion resistant coating
(ISO14993 Compliant)

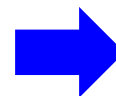
Outdoor IR PTZ
WV-X6533LNS / S6532LNS



+

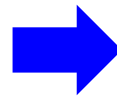
Wall Mount Bracket

WV-Q122BS



Ceiling Mount Bracket

WV-Q121AS



-PRO