

Panasonic

ideas for life

5

Series

Trademarks and registered trademarks

- "Super Dynamic", "SDII", "SDIII", "SD5", "SD5Link", "SD6", "i-PRO" and "i-PRO SmartHD" logos are trademarks or registered trademarks of Panasonic Corporation.
- UniPhier is a registered trademark of Panasonic Corporation.
- iPad, iPhone and iPod touch are registered trademarks of Apple Inc.
- ONVIF and the ONVIF logo are trademarks of ONVIF Inc.
- All other trademarks identified herein are the property of their respective owners.

Important

- Safety Precaution: Carefully read the operating instructions and installation manual before using this product.
- Panasonic cannot be responsible for the performance of the network and/or other manufacturers' products used on the network.
- The same catalog is provided for all countries. Some accessories may not be available in some countries.

Security Cautions

- When using the products in this catalog, take appropriate measures to avoid the following security breaches:
 - Disclosure of private information via the products.
 - Unauthorized use of products by a third party.
 - Interference or suspension of use of products by third party.

- All pictures are simulated.
- Design and specifications are subject to change without notice.
- These products may be subject to export control regulations.

i-PRO SmartHD

DISTRIBUTED BY:

Panasonic

<http://panasonic.net/security/>

[f http://www.facebook.com/PanasonicNetworkCamera](http://www.facebook.com/PanasonicNetworkCamera)

Printed in Japan (2B-011A)

5
Series

3
Series

i-PRO SmartHD

1
Series

What's i-PRO SmartHD?

Smart investment with more than just video surveillance

- Better identification far beyond your experience
- Cost Saving upon Total Cost Owner Ship
- More than just video surveillance with intelligence

SmartHD 5 series Concept

3 Smarts



Smart Picture Quality

- Panasonic 1080p picture quality
- Mega Super Dynamic
- Strong performance in low light conditions
- Lens Distortion compensation (LDC)

5
Series



Powered by
Enhanced UniPhier®

Smart Efficiency

- 2 Area VIQS (Variable Image Quality on Specified Area)
- Enhanced UniPhier® high efficiency compression - Sequential Cropping function
- SDXC Edge Recording - High efficiency 1080p bitrate control - Picture-in-picture

Smart Intelligence

- Advanced Face Detection - Facial Super Dynamic
- i-VMD (Intelligent Video Motion Detection)*
Loitering Detection/Direction Detection/Scene Change Detection/Face Detection

*Optional features

Smart Picture Quality

High Resolution (1080p Full HD images up to 30fps) High Sensitivity Color Reproduction



Panasonic SmartHD 5 Series network cameras are equipped with a 3.1 megapixel high sensitivity MOS sensor, creating high resolution 3 megapixel JPEG (2048 x 1536) and Panasonic high profile H.264 compression Full HD (1920 x 1080) 30fps images to meet a wide range of surveillance requirements. JPEG/H.264 multiple streaming transmission is also supported.

A minimum illumination of 0.5 lx* allows color images even in minimal lighting.

The Electronic Sensitivity Enhancement and Day/Night features enhance this capability even further to 0.03 lx(Color)/0.004 lx(BW)* when filming in the dark, making these cameras ideal for 24-hour surveillance.

* WV-SW559, WV-SF549, WV-SF539, WV-SP509

FULL HD(1080p)



High sensitivity and color reproduction

Low Light Condition (2 lx)



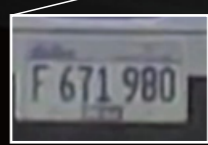
High sensitivity

Color temperature 5100K



Color reproduction

HD(720p)



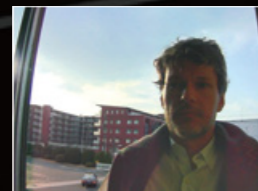
1080p resolution <http://www.youtube.com/watch?v=rHq-bTnKAu4&fmt=37>

Face Detection with Super Dynamic Technology

MEGA SuperDynamic



Wide Dynamic Range OFF



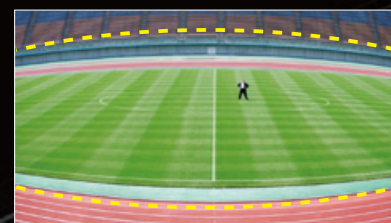
Super Dynamic ON



Face Detection with Super Dynamic ON

The Mega Super Dynamic function corrects illumination difference in images, making it easier to see objects in more natural conditions when monitoring and recording. It also detects human faces and makes them easy to identify.

LDC (Lens Distortion Compensation)



LDC OFF



LDC ON

Image distortion caused by wide lens is compensated to display more natural images.

Fog and Smoke Reduction

Improved visibility of images in fog or smoke using Fog / Smoke reduction function

Fog Outdoors



<Before correction>



<After correction>

Sandstorm Occurring Outdoors



<Before correction>



<After correction>

Smart Efficiency

2-area VIQS (Variable Image Quality on Specified Area)



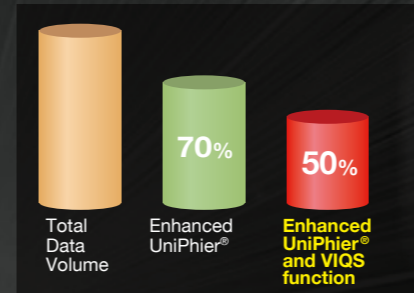
Without VIQS: around 4Mbps



With VIQS: around 3Mbps

The data volume of the overall video can be reduced by filming sections with movement that needs to be monitored in high definition while filming unchanging sections in low resolution. Two areas (total of up to 40% of the overall image) can be indicated as high-resolution monitoring sections.

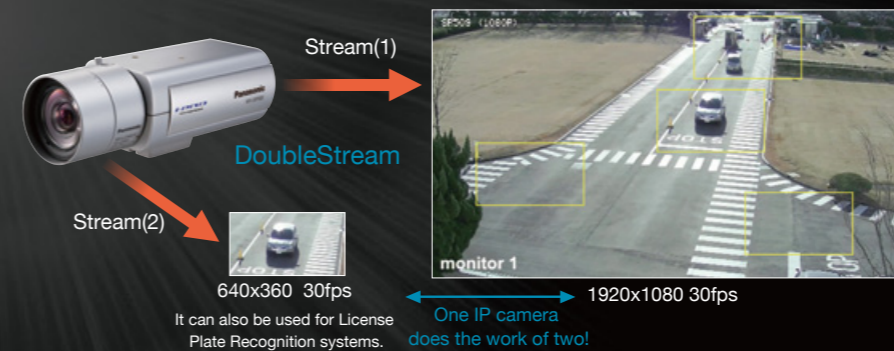
Combination of Enhanced UniPhier® and VIQS function



Data volume can be reduced by a total of 50%* by using Enhanced UniPhier® (up to 30%) and 2-area VIQS (up to 20%). Reducing the data volume decreases the load on the network. It also uses less space on the disc in the recorder, meaning that more images can be stored on a disc of the same size with the same image settings.

* Compared with WV-NP502. Reduction may vary depending on object and image quality settings.

Cropping features



The cropping function allows 1080p full HD (1920 x 1080) images and 360p (640 x 360) images to be sent simultaneously at 30fps.

The cropping function films close-up images of areas requiring monitoring while also recording the entire image with a high image quality (1080p), allowing for efficient use of the network. One camera does the work of two! Four cropping areas can be set in advance, and it is possible to switch between displays of those four areas. It is even possible to indicate and crop areas using CGI.



With cropping sequence mode <http://www.youtube.com/watch?v=NII8tCkqgqk>

Various Transmission Modes

Select from four modes to suit conditions such as the image being filmed and the monitoring environment. This allows for optimal performance for image quality, movement, network load reduction, recording space and more. In addition to "Constant Bitrate", which provides the best picture quality, "Frame rate", which provides the best capturing of objects' movement, and "Best effort", which changes the settings according to network conditions, a new function, "Advanced VBR (Variable Bitrate)" has been added. Advanced VBR secures recording space on the recorder while maintaining a constant image quality, and can even film complex scenes without decreasing image quality.

SDXC Memory card edge recording



(WV-SP509/WV-SW559/WV-SF549/WV-SF539)



SDXC, SDHC and SD memory cards supported.

An SD memory card can be installed in the camera to record images. The camera can be set to record images to the SD memory card if a network problem causes a loss of communication between the camera and recorder, or when an alarm is detected.

Smartphone, Tablet PC monitoring*



Monitoring can even be done from smart phones or tablet computers. The image is optimized to suit the screen. This makes it possible to monitor an area even while away or in transit.

* iPad, iPhone, iPod touch (iOS 4.2.1 or later), Android™ mobile terminals
For further information about compatible devices, refer to our web site (<http://panasonic.net/pss/security/support/info.html>).

Smart Intelligence

Advanced Face Detection and Facial Recognition



Advanced face detection detects the position of human faces and sends the information as XML data*. Eight faces can be detected at once.



* Optional feature

Network Disk Recorder
WJ-NV200
Additional Business Intelligence Kit
WV-NVF20



This function works with the camera's face detection function to count people in the vicinity and recognize their gender and approximate age. The data detected is output as statistical data.

Intelligent VMD*

Intelligent functions to make your security system operations easier and more secure.

Advanced motion detection



Crossing Over the fence

Detects - the motion of objects in the shooting or detection area. Frames and tracks are displayed around the detected moving object in the live image. Up to 8 objects can be detected simultaneously.

Loitering Detection



Objects staying longer than a specified time

Detects -objects loitering for longer than a specified time from 10 sec to 5 min.

Direction Detection

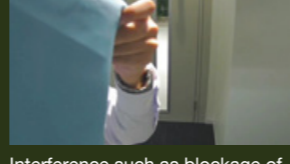
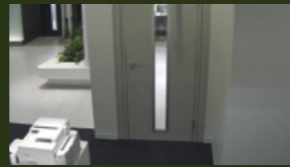


<http://www.youtube.com/watch?v=nthFcQJfTgI&list>

Objects moving in a specified direction

Detects -objects moving in a specified direction. Up to 8 directions can be specified.

Scene Change Detection



Interference such as blockage of the lens with cloth or spray paint

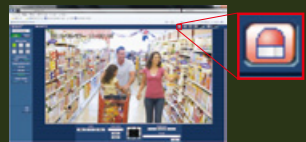
Detects -interference caused by tampering with the camera, such as a manual change in the camera direction or blockage of the lens with cloth or spray paint.

* Optional features

Actions When an Alarm is Detected

Monitoring

Notification sent to the monitoring screen

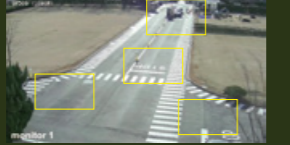


Picture in Picture



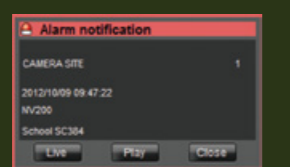
Image of the area where the alarm was detected displayed on the same monitor

Cropping



Monitor 1
Image of the area where the alarm was detected displayed on a separate monitor

Alarm notification sent to the recorder and WV-ASM200 management software



Alarm display in WV-ASM200

Recorded to the SD memory card installed in the camera



Email notification of alarm

Notification sent to device connected to external output

Search lights or patrol lights connected to the external output of the camera are lit

Unique alarm notification

When a unique alarm notification is received, the PTZ moves and zooms in on the detection area



Data saved to FTP server

5 Series Models

Box (indoor) | WV-SP509
WV-SP508



ONVIF

Lens: Optional

WV-SP509 / WV-SP508



Indoor Dome | WV-SF539
WV-SF538



ONVIF

Optional Accessories



Ceiling Mount Bracket
WV-Q105 (for PAL only)



WV-SF539 / WV-SF538

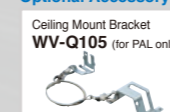


Indoor Vandal Dome | WV-SF549
WV-SF548



ONVIF

Optional Accessory



Vandal Resistant

[Compliant with 20 J (IEC 60068-2-75)/IK10 (IEC 62262)]

WV-SF549 / WV-SF548



Outdoor Vandal Dome | WV-SW559
WV-SW558



ONVIF

Optional Accessories



Water and Dust Resistant

Compliant with IP66 and IEC60529 measuring standards

Ambient Operating Temperature -40°C-50°C (-40°F-122°F)

Vandal Resistant [Compliant with 50 J (IEC 60068-2-75)/IK10 (IEC 62262)]

WV-SW559 / WV-SW558

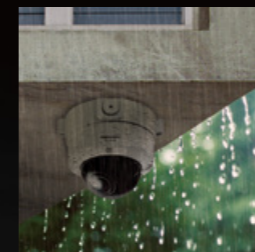


Other Features

Waterproof and dustproof
(WV-SW559/WV-SW558)

IP66
standard

Waterproofing and dustproofing function compliant with IP66. Can be installed outside in an area that receives direct wind and rain without special housing. Compliant with IP66 (IEC60529)



Vandal Resistant Mechanism
(WV-SW559/WV-SW558/
WV-SF549/WV-SF548)

Vandal Resistant



Extremely shock-proof - will not break even under strong impact. WV-SW559/WV-SW558 Compliant with 50J (IEC 60068-2-75) / IK10(IEC 62262) WV-SF549/WV-SF548 Compliant with 20J (IEC 60068-2-75) / IK10(IEC 62262)