

Portrait mode mount bracket

**Description**

This ceiling mount bracket is to be used when mounting projectors to ceilings for portrait mode.

**Specifications**

Vertical correction angle: ±3°  
 Horizontal slant correction angle: ±5°  
 Horizontal turn correction angle: ±1.2°  
 Dimensions (W × H × D): 344 × 1054–1534 × 303 mm (13-17/32 × 41-1/2–60-13/32 × 11-15/16 inches)  
 Weight: 13.5 kg\* (29.8 lbs)\*  
 Applicable projectors: PT-RZ470K/RZ470W/RW430K/RW430W

\* Average value. May differ depending on the actual unit.

Weights and dimensions shown are approximate. Specifications and appearance are subject to change without notice.

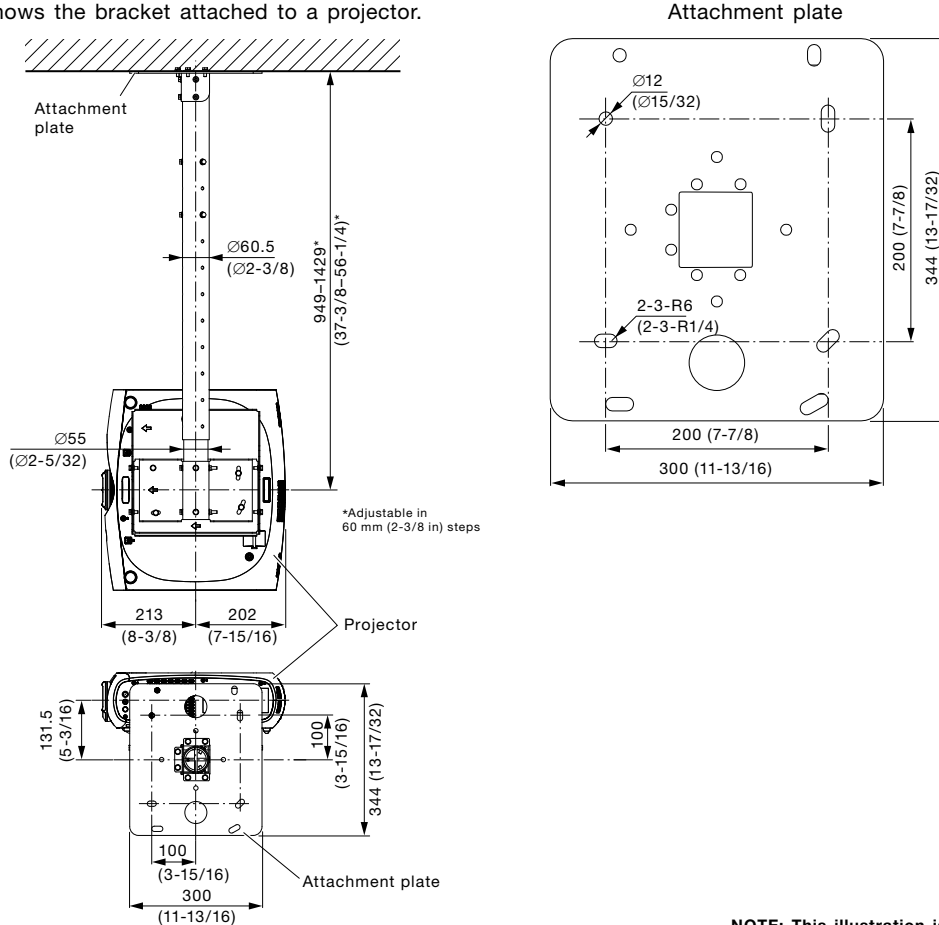
<b>Parts</b>	Attachment plate . . . . .	1	Washer-fitted hexagonal bolts (M6 × 80) . . . . .	4
	Projector mount bracket . . . . .	1	Washer-fitted screws (M4 × 10) . . . . .	4
	Adjustment pole 1 . . . . .	1	Washer-fitted hexagonal bolts (M6 × 16) . . . . .	24
	Adjustment pole 2 . . . . .	1	Washer (M6) . . . . .	4
	Angle adjusting bracket . . . . .	1	Hexagonal nuts (M6) . . . . .	4
	Pole brace . . . . .	1	Ceiling mount bracket drop prevention kit . . . . .	1
	Pole base . . . . .	1	Projector drop prevention kit . . . . .	1

**Caution:**

- Mounting should be done by a qualified technician.
- Make sure that the mounting (ceiling) area has sufficient strength.
- Read the enclosed installation instructions thoroughly before starting.
- Do not use an electric screwdriver or impact driver to tighten screws. (Use a torque driver or similar tool.)
- When the product is no longer going to be used, have it disposed of quickly by a professional disposal service.

**Dimensions**

Illustration shows the bracket attached to a projector.



\*Adjustable in 60 mm (2-3/8 in) steps

unit : mm (inch)  
 NOTE: This illustration is not drawn to scale.