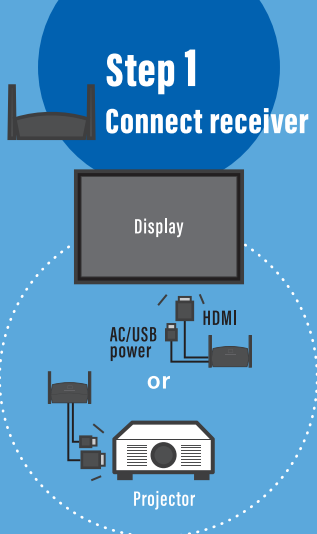


Wireless Presentation System

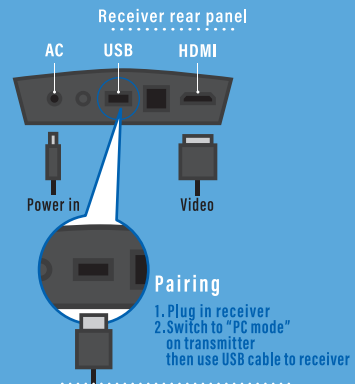
PressIT



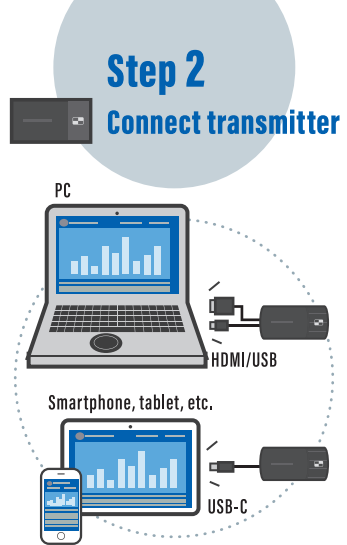
Panasonic
BUSINESS



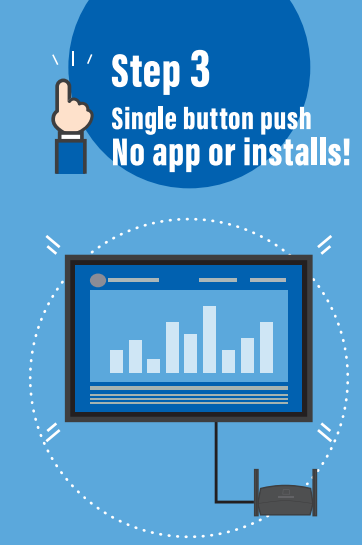
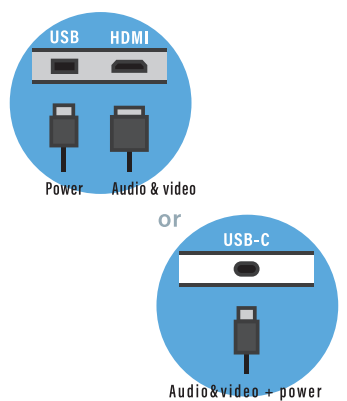
● ● **Connect HDMI and USB** ● ●



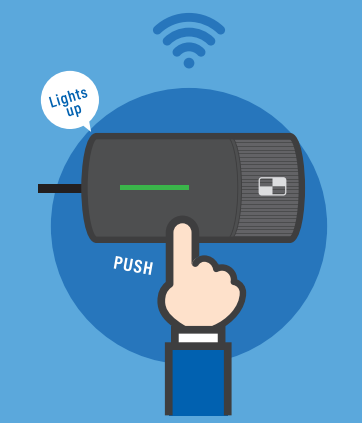
These steps necessary for first-time connection only
*Basic set is paired



● ● **Connect HDMI and USB or USB Type C** ● ●

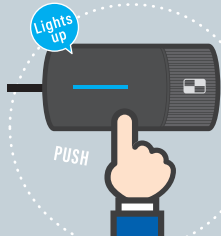


● ● **Single button push for screen sharing** ● ●



Point 1

Lock mode



Press button for several seconds...

Locked screen

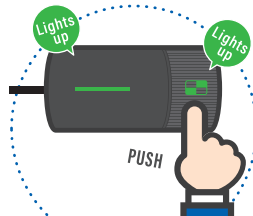


Can be shared only from presenter

Lock mode prevents interrupts from other transmitters

Point 2

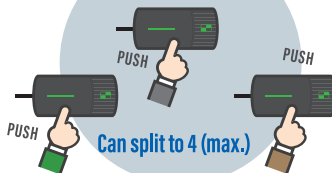
Simultaneously sharing 4 screens



Press sub-button for several seconds

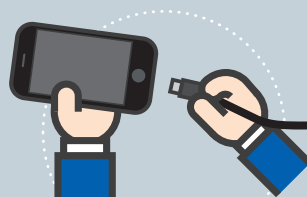


up to 4 screens
【max. 4K】



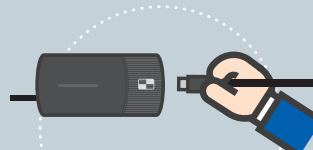
Point 3

Connects to mobile devices



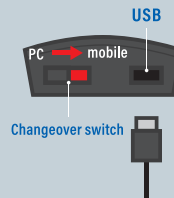
Connectable with Lightning cable

*MFi Certified iPhone and iPad cables



Connect cable to transmitter and switch to mobile mode

Transmitter rear panel



Other Point

High-definition video
Full HD & 60fps

Low latency image

Connects up to
32 transmitters

HDMI-CEC
Power on/off and
automatic input changes

Antibacterial
surface treatment
for transmitter

